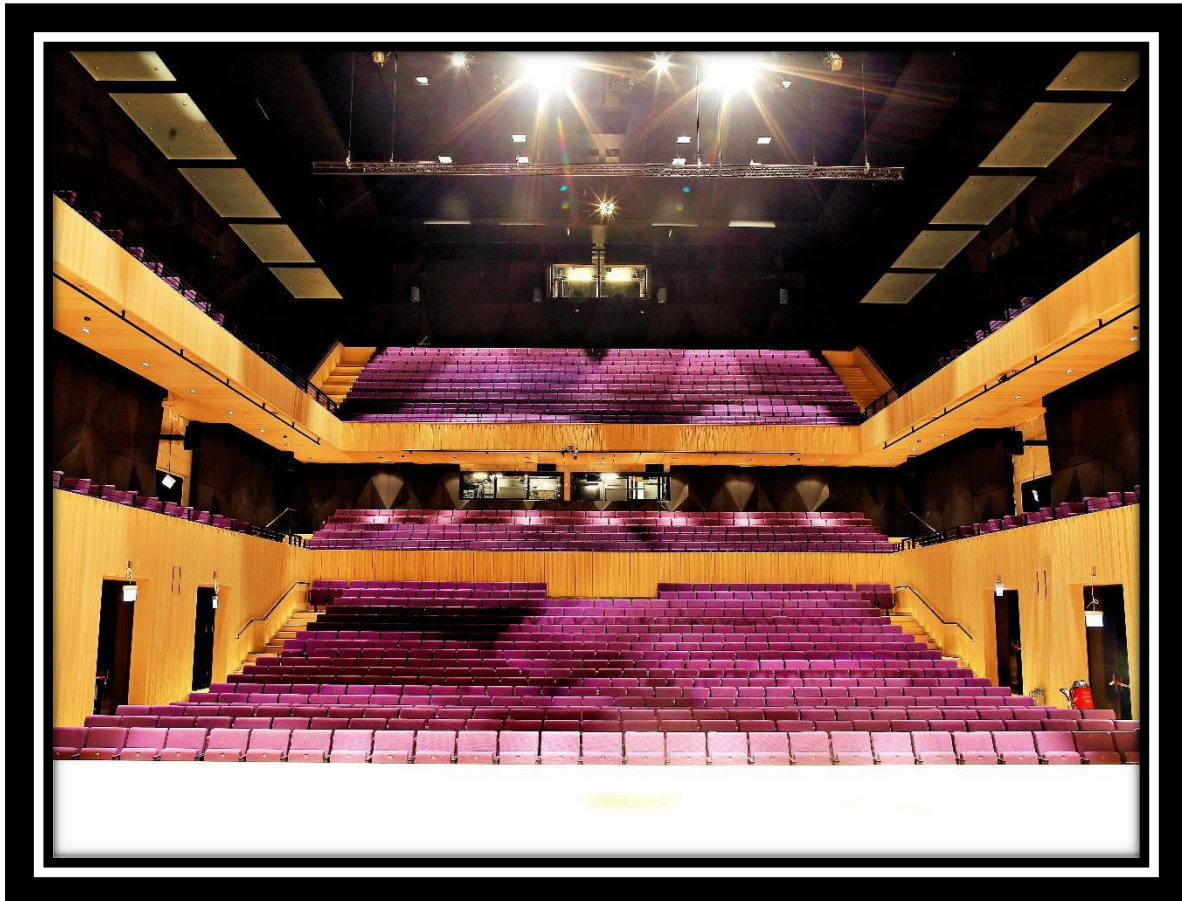


Kilden teater – og konserthus

TECHNICAL SPECIFICATIONS – Konsertsalen 2020



Contact info

Technical Coordinator: Shane Burke tlf: 9568092

E – mail: shane.burke@kilden.com

Concert Hall:

Auditorium:

Kilden's concert hall is a top – class, splendid, modern arena which enhances solo and orchestral sound with moderate amounts of re-verb at all frequencies sustaining a fullness in sound.

Capacity:

Stalls: 519 + 3 wheelchairs.

Circle: 200.

Upper Circle: 312.

Note: Extra wheelchair spaces available with reduced capacity.

Extra 127 seats available for special acoustic performances.

Stage:

Width: 13.8 M U\S17.4 M D\S + stairwell. (With Black Curtains in 13.10m \ 16.90m)

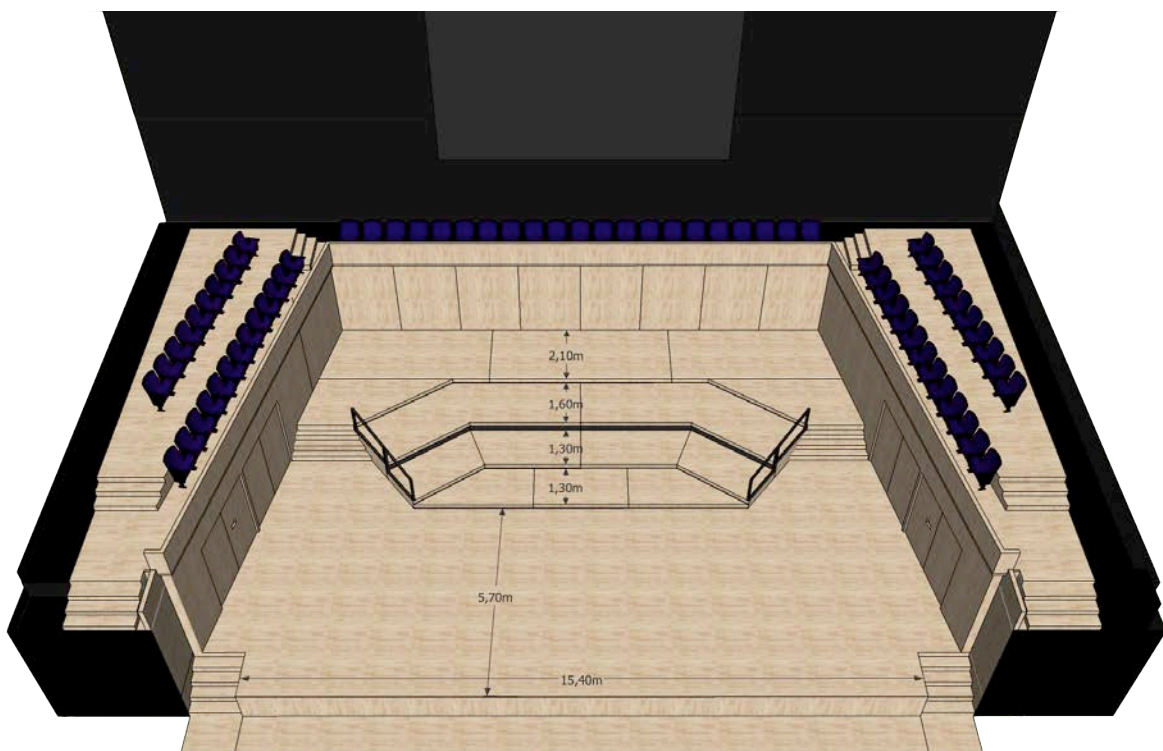
Depth: 12 M. (With Blacks Curtains in 10.80m)

Extended stage

Depth: 3.2 m extended out into the auditorium.

Stage Floor: Brown as in stage plot.

Note: Flat stage available on request and up stage wall can be remove for a get in.



Concert Hall Stage Plot

Power	Load Capacity	Placement
3x	63A 3P 400VAC CEE	Back Stage
2x	32A 3P 400VAC CEE	Back Stage
1x	16A 3P 400VAC CEE	Back Stage
2x	16A Schuko 230 VAC	Back Stage
1x	32A 3P 400VAC CEE	Loft

63AMP MAX per box

Tour Truck Power:

Power	Load Capacity	Placement
3x	63A 3P 400VAC CEE	Next to parking space
1x	32A 3P 400VAC CEE	Next to parking space
1x	16A 3P 400VAC CEE	Next to parking space
2x	16A 3P Schuko VAC	Next to parking space

63AMP MAX per box

Back Stage Area:

Size 224.45 m²

No quick-change room available, however one can be arranged if requested and agreed.

Wheelchair toilet available next to backstage.

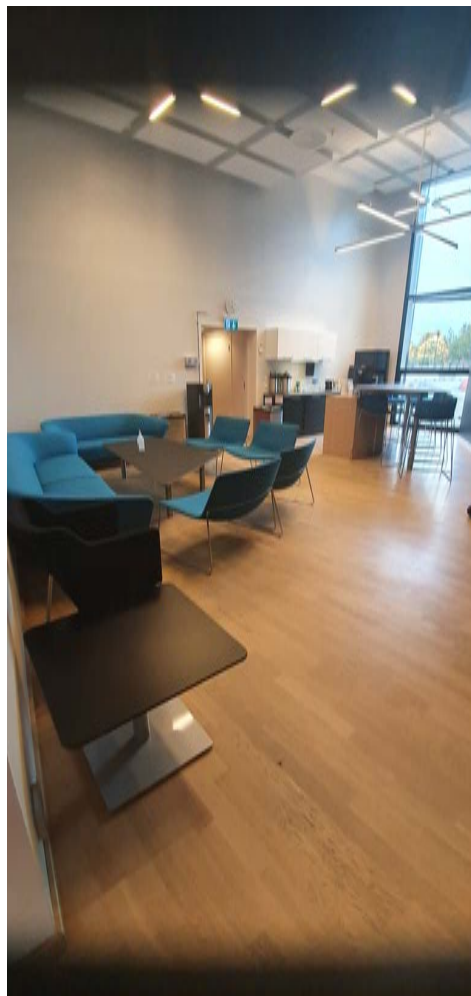
Greenroom available 12 meters from S\R wing entrance



Concert Hall Back stage area



Stage Right Wing Entrances: W 2.88 M, H 2.9 M.



Concert Hall Greenroom

Access

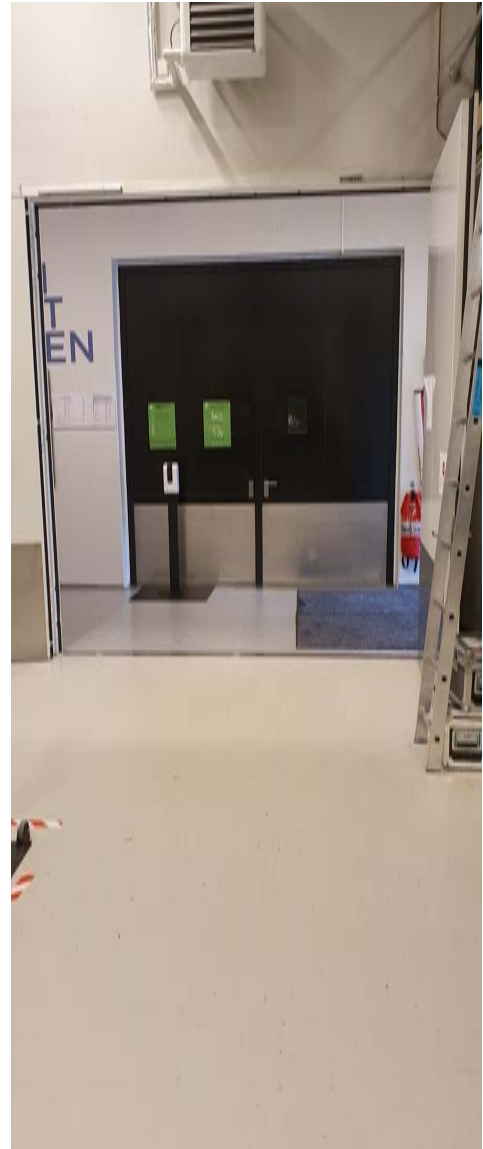
Access to stage via loading dock door through stage fire gate. Loading dock at stage level no ramps or steps.

2 x Stage Fire door: W. 2.85m H. 2.9 m

Loading dock gate: W. 3.5m H. 3.7 m

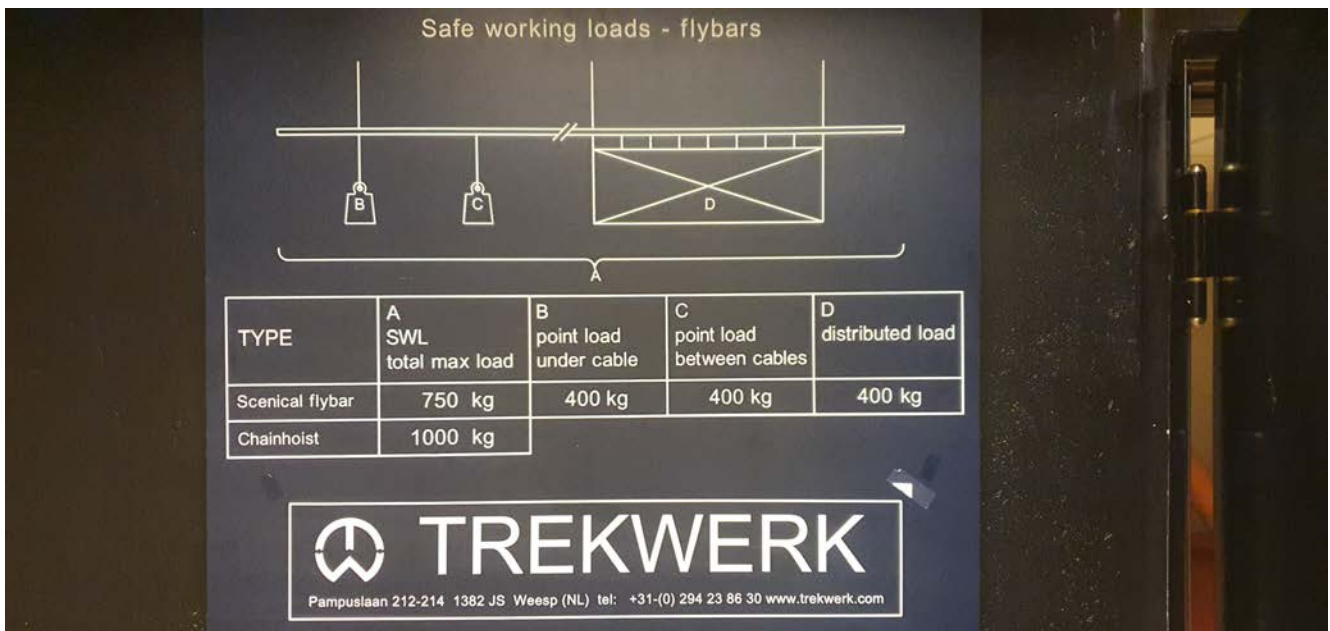


Loading Bay Door



2x Fire Doors.

Flying System



Automated 8 x (H30D) Lighting truss 15 m long (1-8) Maximum weight 750 kg with a point load of 400kg.

Note: No. 5 truss is 14m long.

Maximum Flying height 16.5 m

Note: The venue has glass acoustic reflectors over the stage with a maximum flying of 14.5m. **See Drawings**

Extra Motors & trusses.

2x 500 Kg extra motors with multiple hanging points.

4x 1000 Kg extra motors with multiple Hanging points.

12 m H 30 V truss.

Note: Extra motors and trusses maybe available on request.

Curtains

Blacks velour available to cover completely around the stage area

6 stk 7m x 14m blacks

4 stk 2.5m x 4m blacks

2 stk 3.5m x 4m blacks

2 stk 4m x 4m blacks

Note: Extra blacks maybe available on request.

JLG Scissor Lift:

JLG 2630ES (working height 7.9 m)

Vertical Lift, Mast lift:

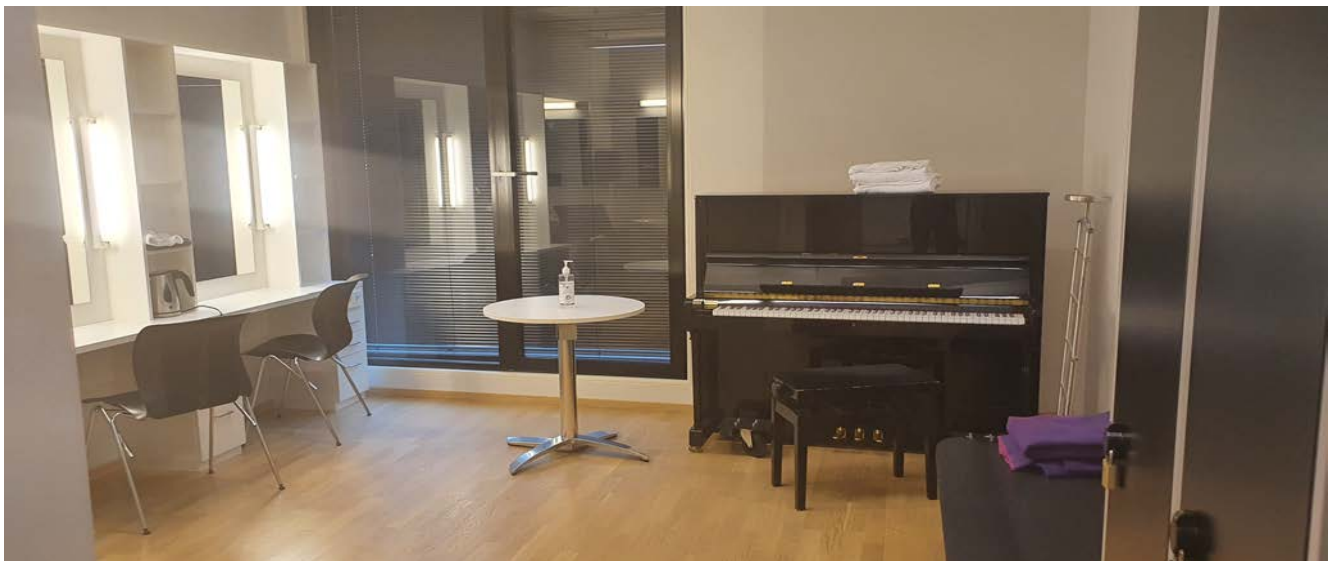
Working height 12m max load 150 kg.

Ladders:

3x Zarges, tallest has a max height of 6.1 m and 150 kg max load. Numerous A Frame ladders, tallest A Frame has a max height of 2.5 m. Note: All ladders and mechanical lifts are for all venues. [Please check availability](#)

Communication:

All dressing rooms are located on the 2nd floor numbers 4 till 10 when needed. All dressing rooms have a shower and a live audio link to the concert hall. There are Walkie Talkies available with earpieces for communication between your company and the crew.



Dressing Room 5

Laundry:

Located on 2nd floor, 2 x washing Machines, 1 x Dryer and ironing facilities with the laundry facilities been shared among all our venues.

Note:

Stage podiums, dance marley, music stands, note lamps, rigging and grand pianos etc available by appointment. Please contact the technical coordinator in due time to discuss the needs of your production.

Lighting

Haze / smoke and pyro – effects.

Kilden are not allowed to disconnect parts of, or the total fire detection system at Kilden. The detectors are adjusted to take a moderate amount of haze/smoke. All use of haze/smoke or pyro effects must be tested and approved by the technician responsible for the specific performance at Kilden.

Console:

Grand MA2 with 8 Universe's Scan/artnet or dmx connection available.

Profiles:

Source 4 750W 19° (fixed position conductor)	2 pcs
--	-------

Fresnel:

Robert Juliat 310HF 1200W (fixed position front lighting)	20 pcs
---	--------

Robert Juliat 329HF 2500W (fixed position front lighting)	4 pcs
---	-------

DeSist Monet 2500W (fixed position orchestra lighting)	6 pcs
--	-------

Parcans:

Par64	44 pcs
-------	--------

Moving Heads:

ADB Motorized Warp – 800 12- 30° + 8" Rainbow scroller (fixed position)	8 pcs
---	-------

Martin Mac Encore Performance CLD	12 pcs
-----------------------------------	--------

Martin Mac Aura XB	14 pcs
--------------------	--------

Dimmers:

AVAB CAB Modular dimmer rack from State Automation "Australia"

236 x 3 kw patchable dimmer circuits.

135 x 3 kw patchable non dim relay circuits.

8 x 5 kw patchable non-dim relay circuits.

48 x 3 kw patchable sinus dimmer circuits.

Smoke:

MDG Atmosphere Haze Generator	1 pcs
-------------------------------	-------

Follow Spot:

Robert Juliat Cyrano 2500 HMI	2 pcs
-------------------------------	-------

Note:

Additional light sources, side lighting etc. maybe available by appointment. Please contact the technical coordinator in due time to discuss the needs of your production.

Av:

15 k EB -L17755U Projector (Rigged on request)

Projector Screen:

A verity of screens available please check.

Signal Distribution:

Video distribution via BNC – terminated coaxial cable. Cable is specified to carry 3G HDSDI signal.

2 termination points (signal to/from box)

Locations:

Back stage:	1x SL & SR		
Stage:	5x boxes across D\S		
FOH:	1x Sound side		
1 st floor	1x U\S	2x S\L	2x S\R
2 nd floor		2x S\L	2x S\R
Loft.	1x Auditorium	1x S\L	1x S\R

Note:

Additional AV equipment maybe available by appointment. Please contact the technical coordinator in due time to discuss the needs of your production.

Lyd**PA**

BSS Soundweb matrix

24x d & b audio technology J-series line array (d & b D80 amplifier)

6x d & b audio technology J-series sub (d & b D12 amplifiers)

4x JBL AC26 frontfill (2 channels) (Crown amplifiers)

14x JBL AC2212, 4x JBL AC28 and 2x JBL C322C surround sound (6 channels) (Crown amplifiers)

Mixer:

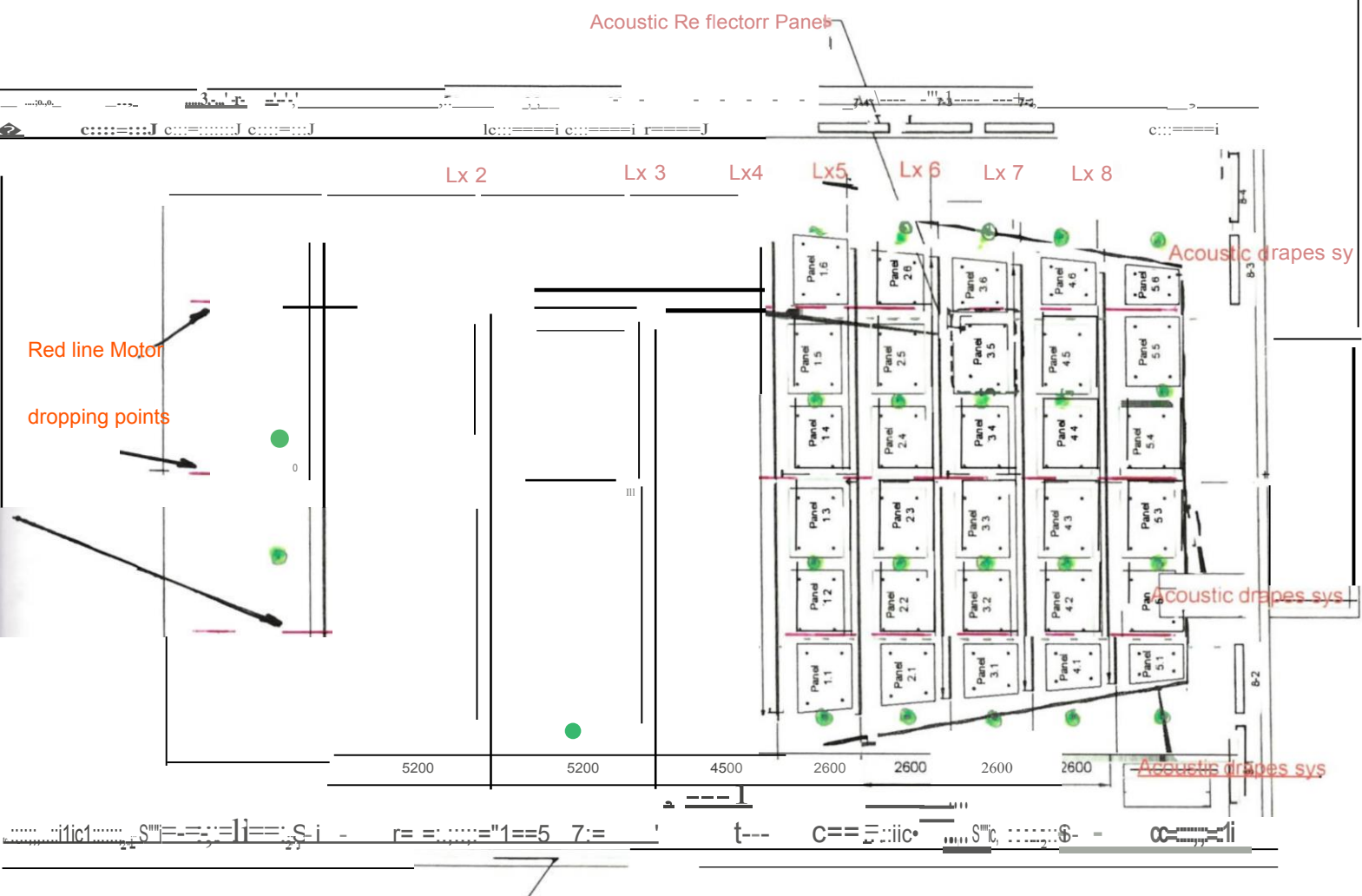
Soundcraft Vi7000 w / free madi card and free Dante card, wired to FOH 64 in / 32 out - stage rack.

Monitors:

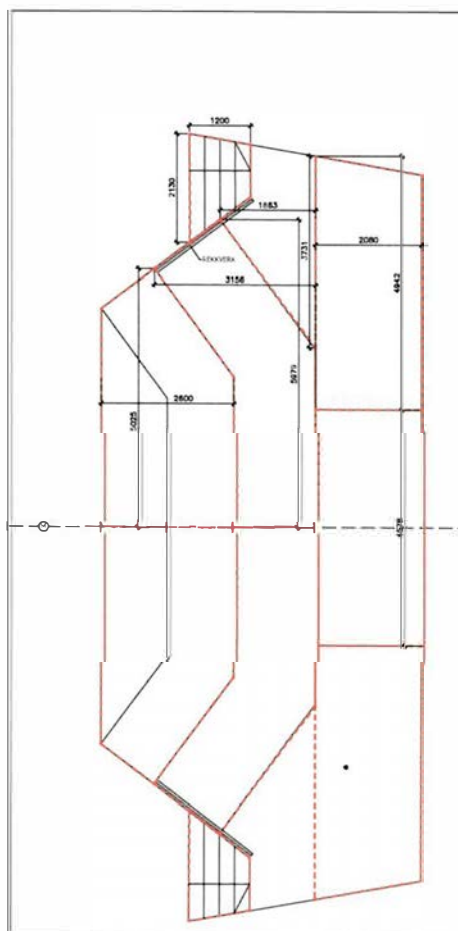
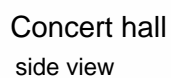
Martin XE 300 (Martin IK amplifier)

Note:

Additional sound equipment maybe available by appointment. Please contact the technical coordinator in due time to discuss the needs of your production.

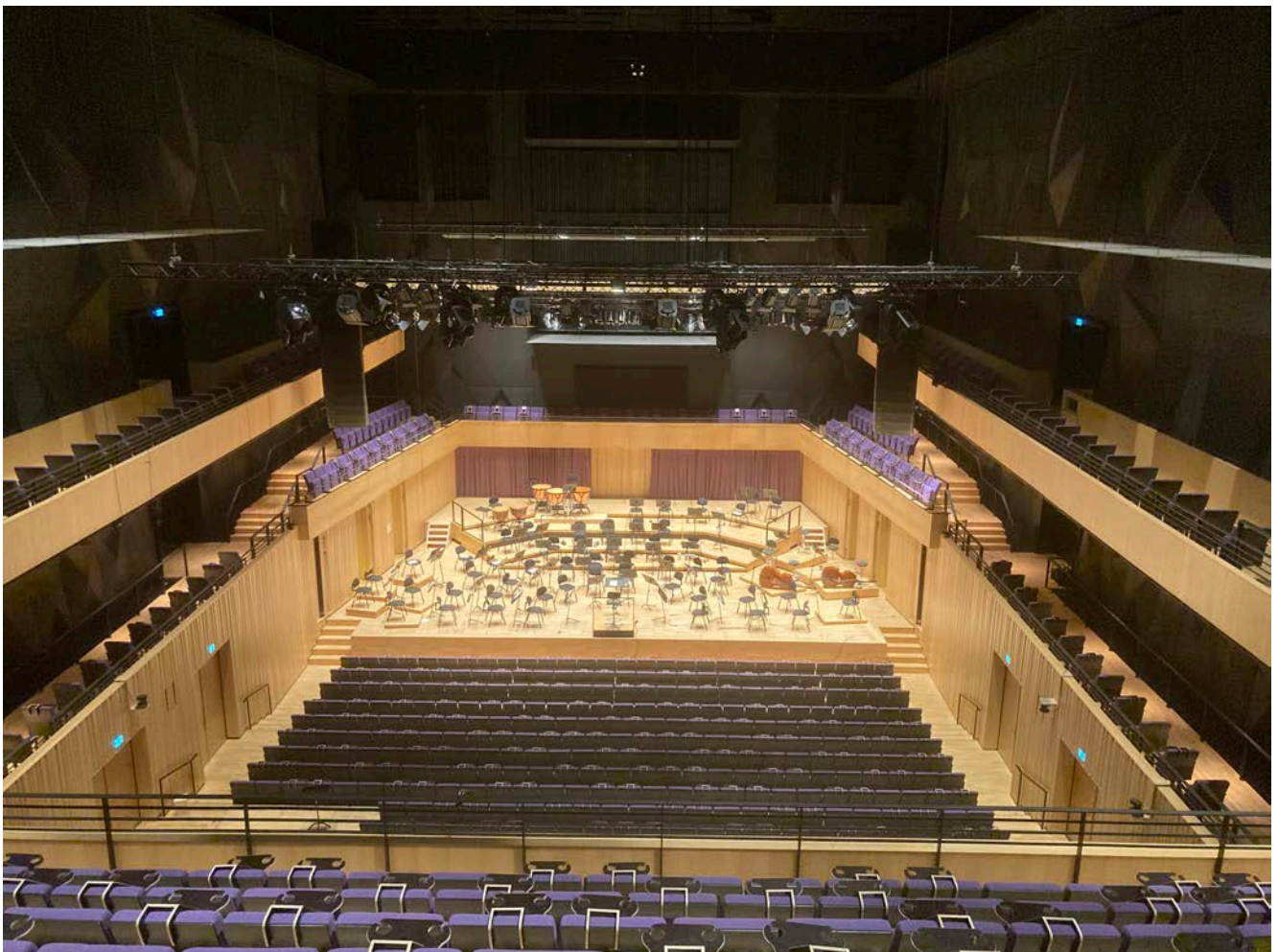


Concert Hall Plan

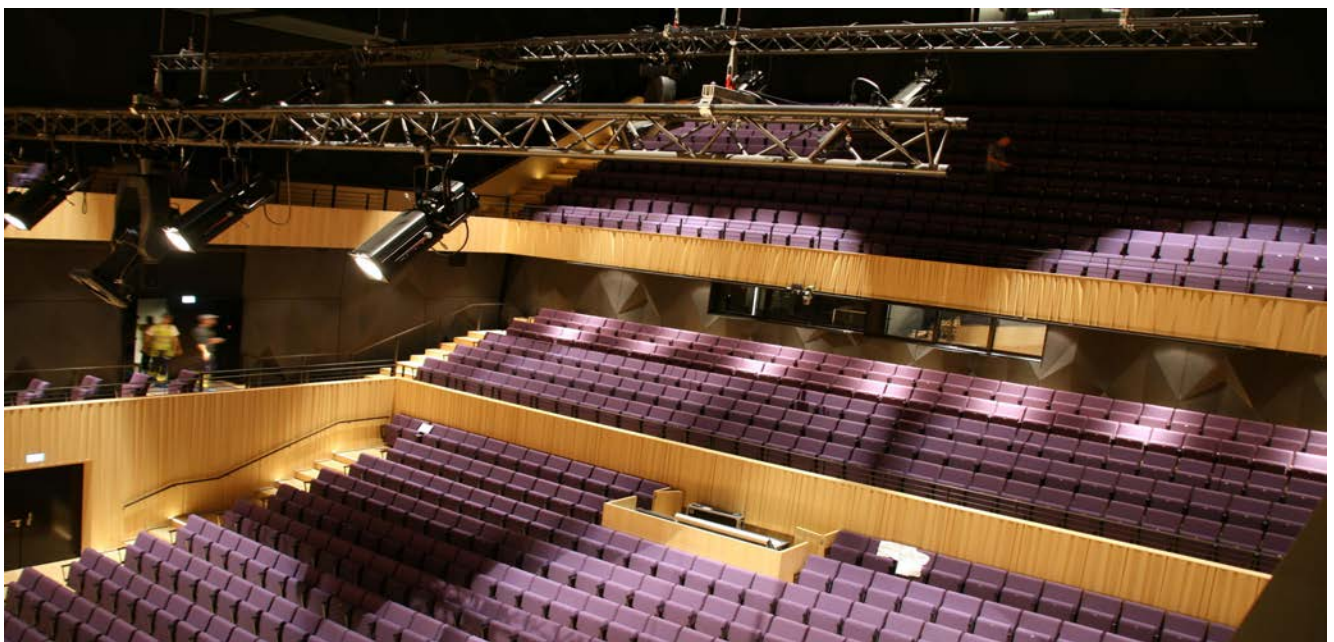
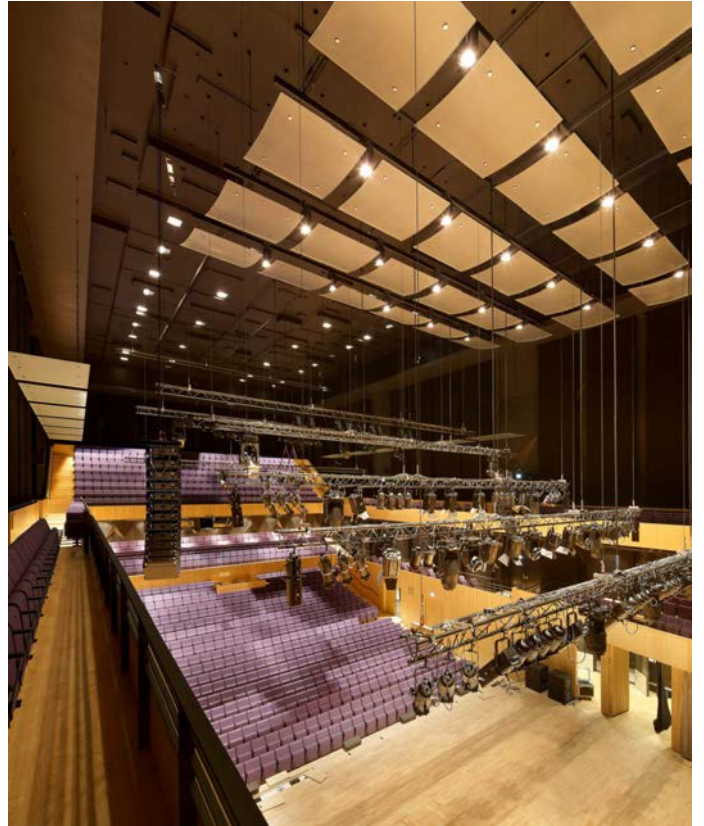


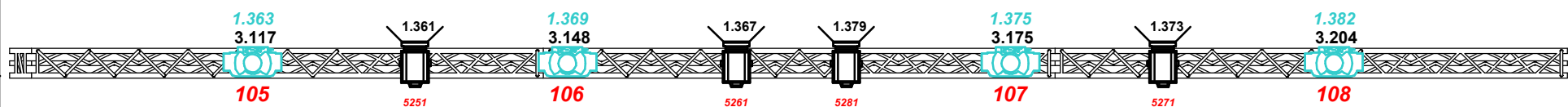
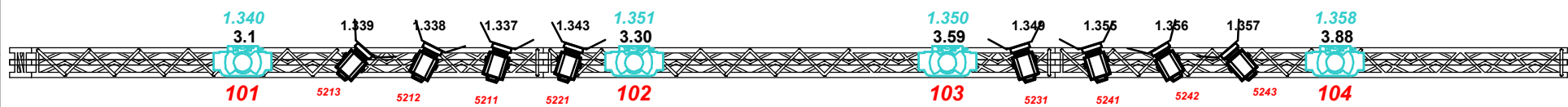
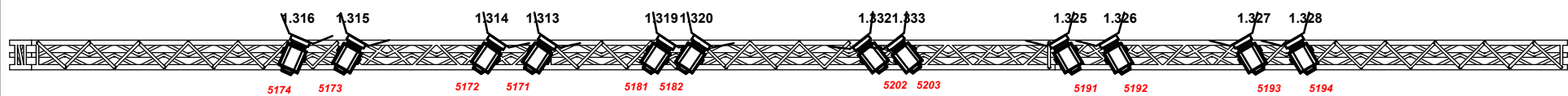
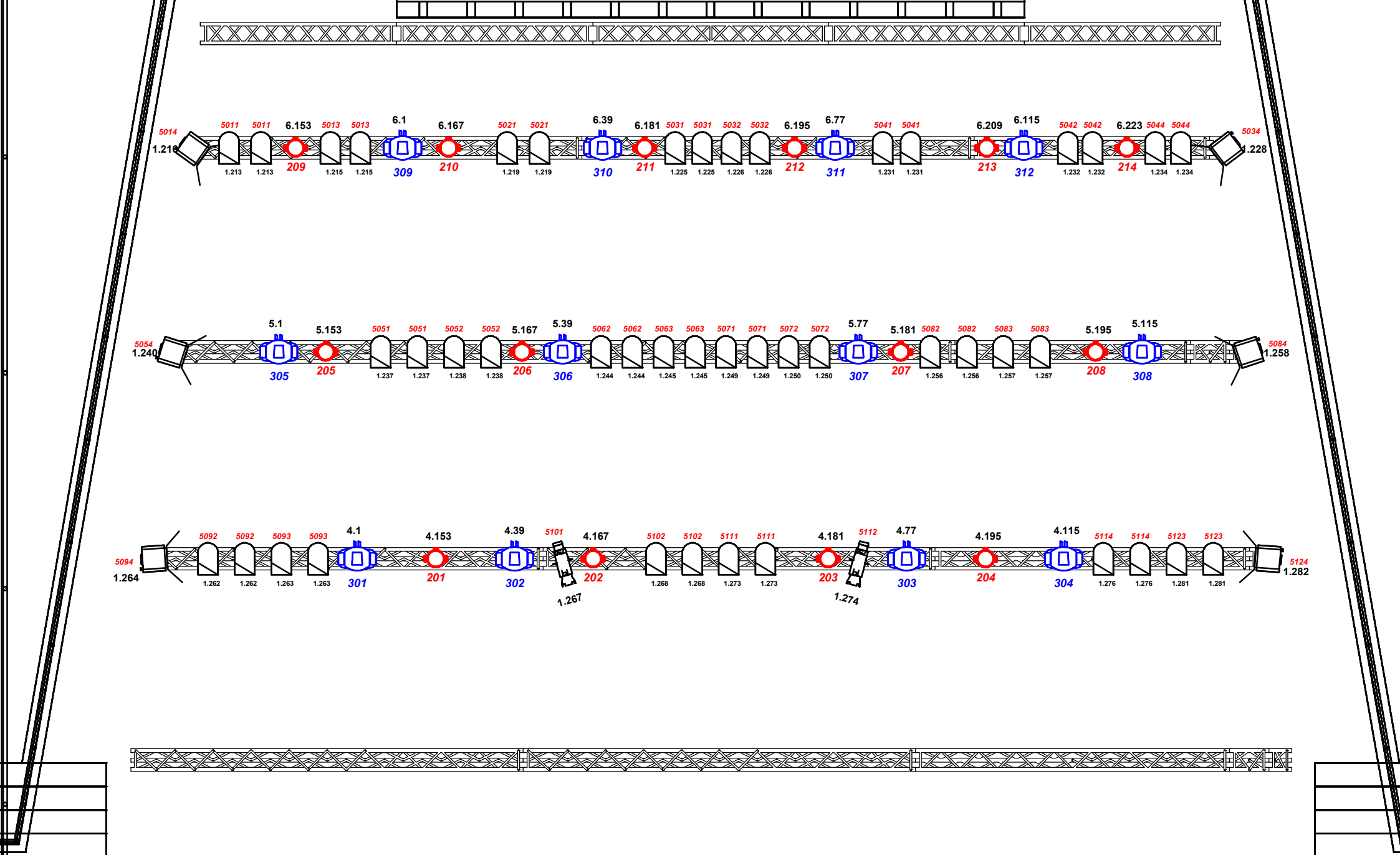


Concert Hall side view












Concert Hall





KONSERTSALEN - KILDEN TEATER OG KONSERTHUS

FIXTURE SCHEDULE

Count	Symbol	Name
8		ADB Warp 12-30 deg
14		MAC Aura XB
12		Mac Encore Performance CLD
44		PAR 64 CP61
2		RJ Cyrano 2500 HMI Followspot
20		RJ 310 HF (orchestralights)
4		RJ 329 (orchestralights)
6		De Sisti Monet 2kW Pole Op (orchestralights)
2		CE Source 4 750 (orchestralights)

NOTES

- The Konsertsalen runs on sACN controlled by a grandMA2 Light.
- A standard lighting rig (as per plan) is available at all times and on failure to communicate within adequate antecedence KILDEN is not obligated to proceed with any changes.
- In all instances pertaining to rigging safety, KILDENs technical personnel shall determine the appropriate measures to be taken.
- Each truss counts with 16 x 3k dimmable channels and 8 x 3k relays
- Use of atmospheric Haze or Strobe Lighting only if advised previously
- Follow spot operator only if advised previously

Unit for relay control in concert hall

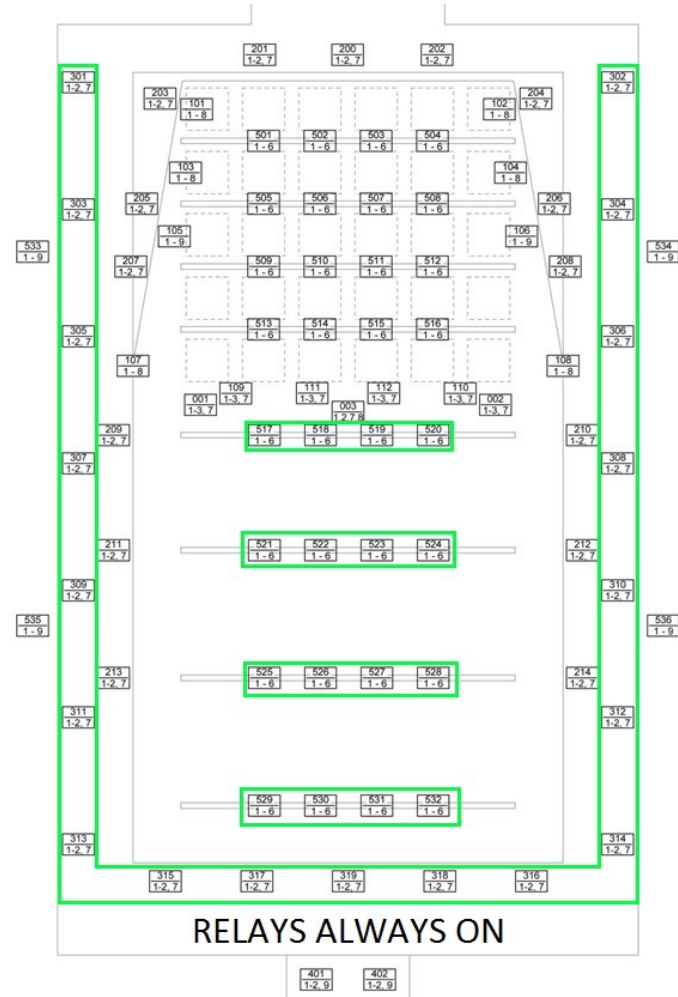


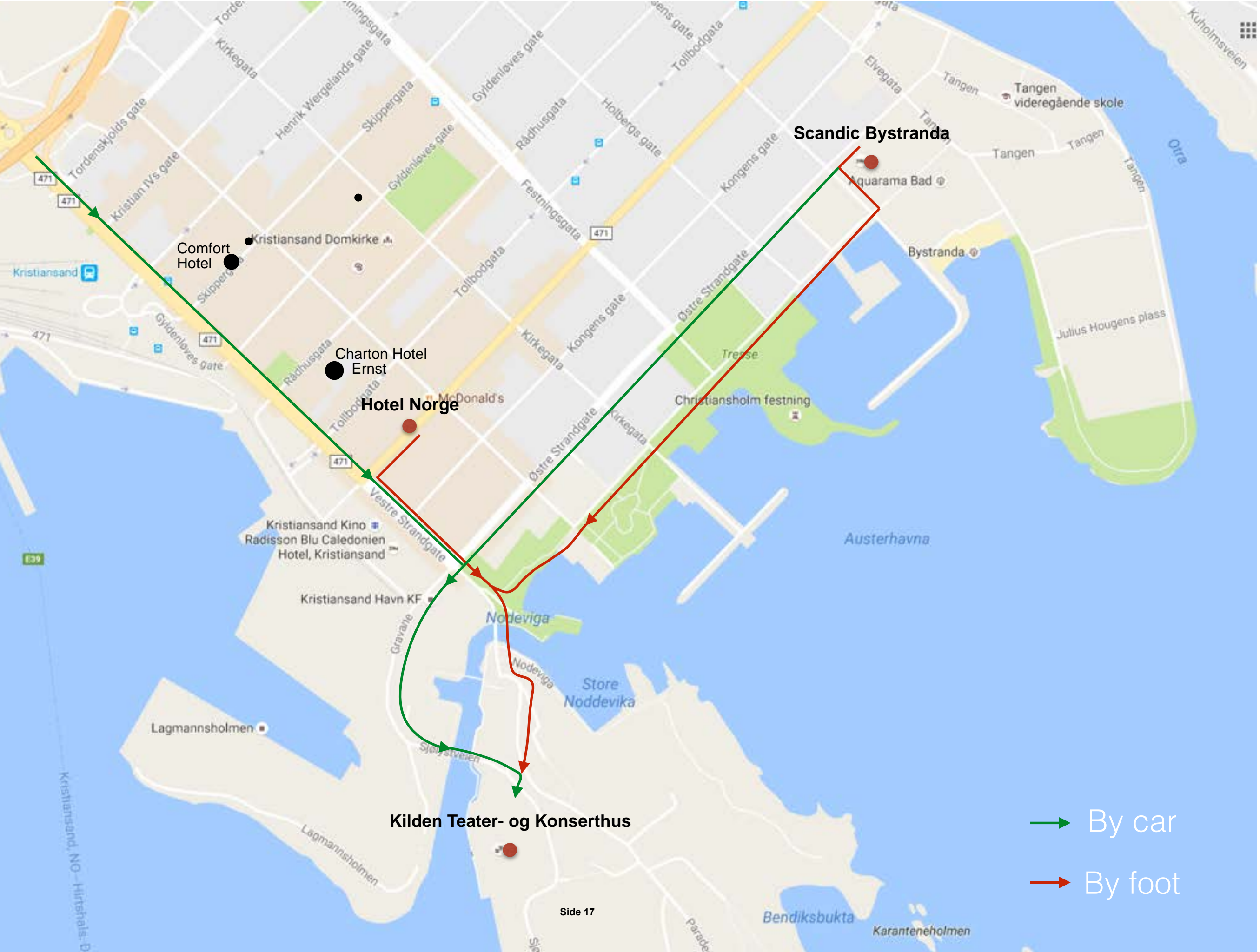
We have installed a Unit to control the relay's in the concert hall. It's in the top of the rack in the dimmer-room for the concert hall. There is two cues recorded, Cue1<Relay off> & Cue2<Relay on> . You can toggle between them with the fader to the right. Have in mind that this is a HTP unit. So you can still turn on&off relays from the desk when the unit is set to <relay off>. but you can't turn the relays off from the console when the unit is switched to <relay on> because highest takes precedence.

Cue1<Relay off> will turn off all the relays except the contractors in green. This is to prevent the warp's from resetting. It's also handy when you need hot power for projectors etc.

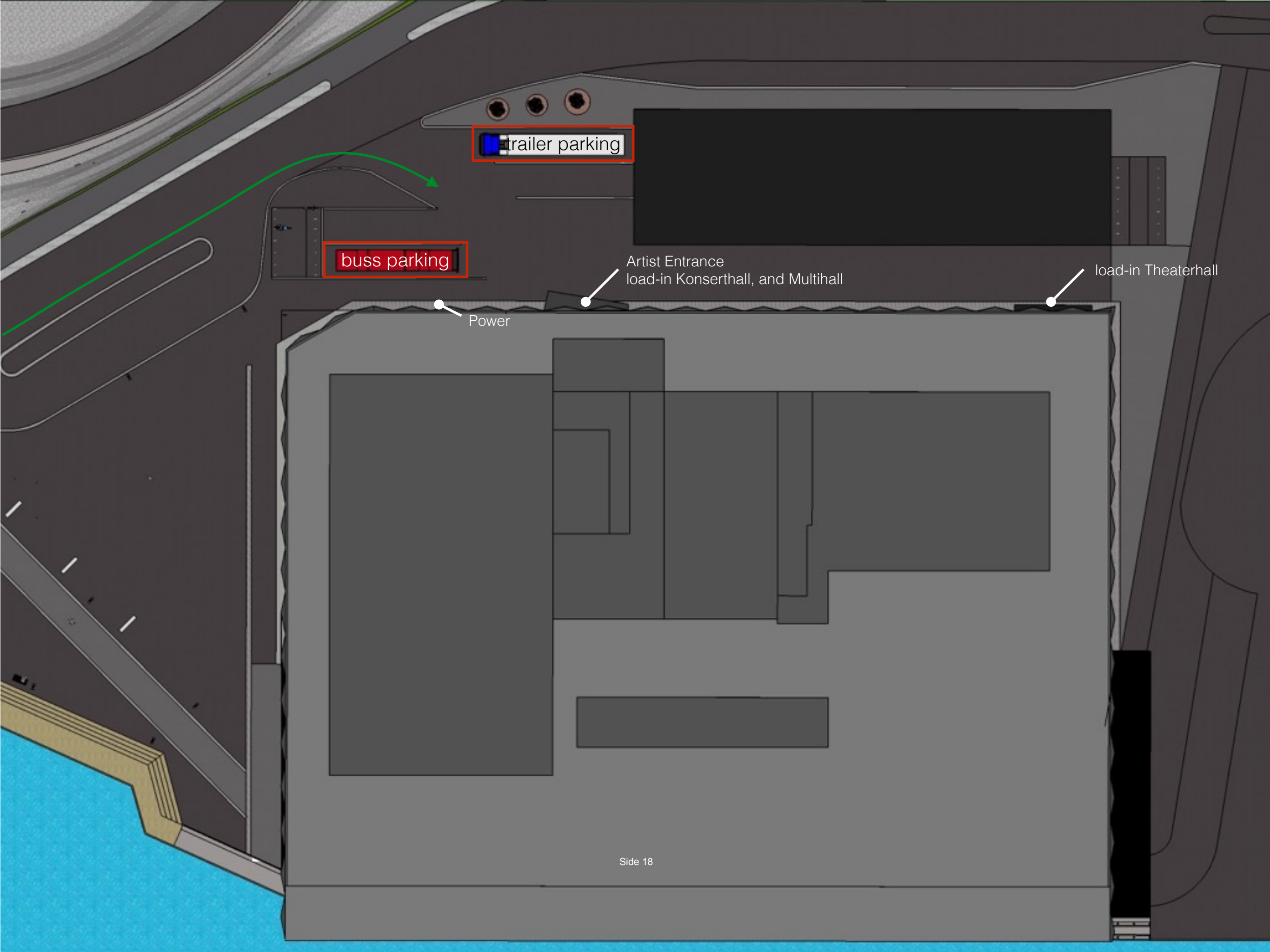
Cue2<Relay on> will turn on all the relays. Now you can't turn the relays off from the console. This is good when there is a guest technician with their own showfile or console. There is no need to patch the relays or set our console offstage to hold the relays on.

If you don't want to use the system just unplug the dmx cable from the back of the unit.





→ By car
→ By foot



trailer parking

buss parking

Power

Artist Entrance
load-in Konserthall, and Multihall

load-in Theaterhall



