

Kilden teater og konserthus

TECHNICAL SPESIFICATIONS – MULTISALEN 2024



Contact info

Technical Coordinator: Shane Burke tlf: 95968092

E -mail: shane.burke@kilden.com

Multisalen

AUDITORIUM:

The venue is a flexible “Black-box” with retractable seating.

STAGE:

Width: 12m

Depth: 9m

Hight: 5,8m

Floor: Black

With the retractable seating in, the stage has a depth of 9 meters and an audience capacity of 220.

When the retractable seating are retracted the space is 279 m sq.

Standing audience capacity is 160 and a further 68 in balcony seating. Totalt 228 personer.

Maximum of 80 performers allowed on standard stage.

NB! There are Fire Exits at each side of the stage. [See Drawings](#)

Power	Load Capacity	Placement	
1x	63A 3P 400 VAC	Balcony SL & SR	63 AMP MAX PER BOX
1x	32A 3P 400 VAC	Balcony SL & SR	
1x	16a 3P 400 VAC	Balcony SL & SR	
2x	16a Schuko 230 VAC	Balcony SL & SR	
2x	63A 3P 400 VAC	Loft	
1x	32A 3P 400 VAC	Stage SL & SR	
1x	16a 3P 400 VAC	Stage SL & SR	
2x	16a Schuko 230 VAC	Stage SL & SR	

Backstage area

Size 71 m sq. shared space.

No Quick-Change dressing rooms. (We can build one backstage on request)

1 x Wheelchair accessible toilet.

Access

Access to stage via loading dock door through stage fire gate. Loading dock at stage level no ramps or steps.

Stage Fire door: W. 2.7m H. 3.8 m

Loading dock gate: W. 3.5m H. 3.7 m

Flying system

Automated square truss over standard stage with 4 x 1 Ton motors. 80 kg between sections and a total of 625kg per chain hoist lifting point.

Automated FOH truss with 2 x 1-ton motors. 150 kg \m or 625kg CPL.

P. A . 2x 1-ton motors.

1 x 1-ton motors available on request restricted hanging points.

Note: Warp truss fixed. [See Drawings](#)

Curtains

6 x Black velour legs W 2.50m H 5.8m hung from on stage truss.

All walls in venue have full blacks including up stage.

JLG Scissor Lift

JLG 2630ES (working height 7.9 m)

Vertical Lift , Mast lift.

Working height 12m max load 150 kg.

Ladders

3x Zarges, tallest has a max height of 6.1 m and 150 kg max load.

Numerous A Frame ladders, tallest A Frame has a max height of 2.5 m.

Note: All ladders and mechanical lifts are for all venues.

Communication

All dressing rooms have a live link to your venue.

There are Walkie Talkies available with earpieces for communication between your company and crew.

Greenroom

Only available when not in use by theatre venue.

Laundry

Located on 2nd floor, 2 x Washing Machines ,1 x Dryer and Ironing facilities.

Note: Laundry is for all venues.

Note:

Stage podiums, dance Marley, music stands, note lamps, rigging and grand pianos etc available by appointment.

Please contact the technical coordinator in due time to discuss the needs of your production.

LIGHTING

Haze/smoke and pyro-effects.

Kilden are not allowed to disconnect parts of, or the total fire detection system at Kilden. The detectors are adjusted to take a moderate amount of haze/smoke. All use of haze/smoke or pyro effects must be tested and approved by the technician responsible for the specific performance at Kilden.

Console IP 192.168.231.001

Grand MA 3 with sACN kontroll or DMX channels

Profiles

Robert Juliat 613sx 1200w 28/54° zoom profile 12pcs

Robert Juliat 614sx 1200w 16/35° zoom profile 12pcs

Fresnel

Robert Juliat 310HF 1200W 13pcs

Pars

Thomas Pars 64 12pcs

Moving Heads

ADB Warp – 800w 12/30° + Rainbow 8" (Fixed position) 3pcs

Mac Aura Xp 6 pcs

Alpha Spot QWO 6pcs

Dimmers

AVAB CAC

162 x 3 kw patchable dimmer circuits.

56 x 3 kw patchable hot power circuits.

Hazer

Swefog Ultimate 3000

Note:

Additional light sources, side lighting etc maybe available upon request.

Please contact the technical coordinator in due time to discuss the needs of your production.

AV:**Projector**

Epson 6k Projector EB L 6152 (Manual Zoom Lens only)

Projector screen

Motorized Projection screen white 3.7 m maximum height x 4.9 m.

Signal Distribution

2 x Tie lines are via Coaxial cable SDI 3G HD resolution with BNC connectors.

Distribution points 4 x USL, USR,DSL, DSR ,4 x balconies points,2x in the loft and one at FOH.

Note:

Assorted Projectors, AV – equipment plus extra cables are available upon request.

Please contact technical personnel.

SOUND**Mixer:**

Soundcraft Vi5000 w / free madi card and free Dante card, wired for FOH

64 in / 32 out – stage rack.

Speakers/P. A:

BSS Sound web matrix

12x d & b audio technology Y-series line array (d & d D80 amplifier)

6x d & b audio technology Y-series sub. (D&B D80 Amplifiers)

2x d & b audio technology E8 (2 channels) (d & b D80 amplifiers)

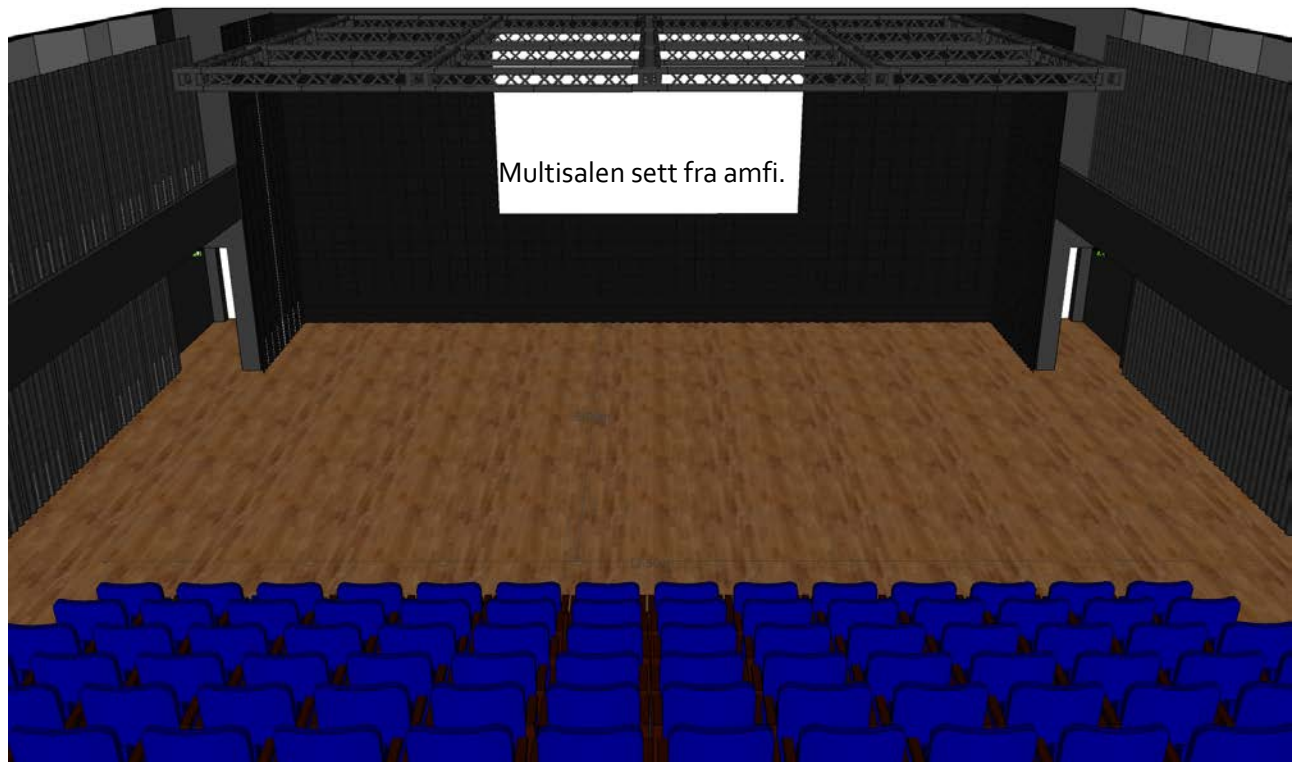
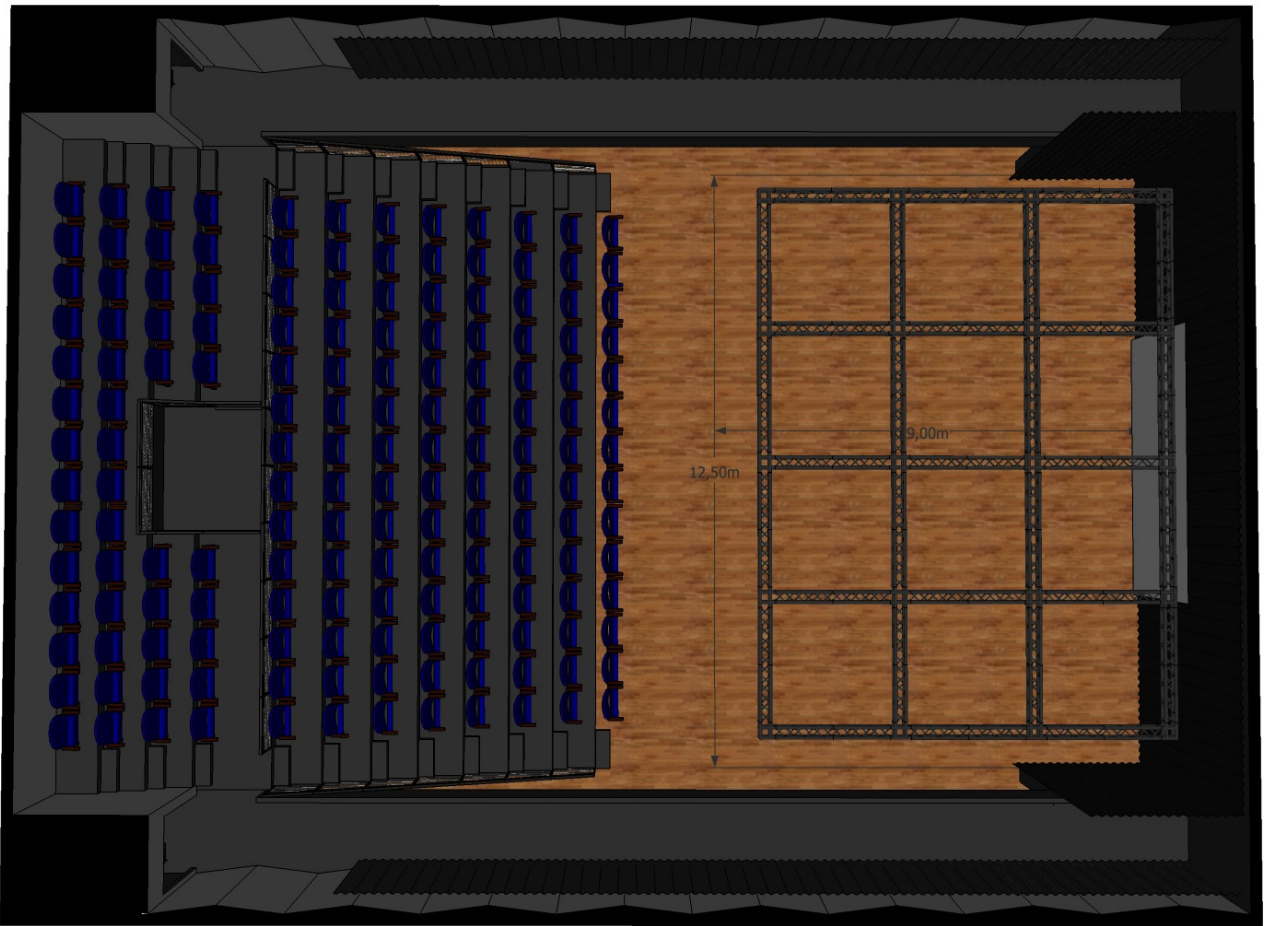
Monitor

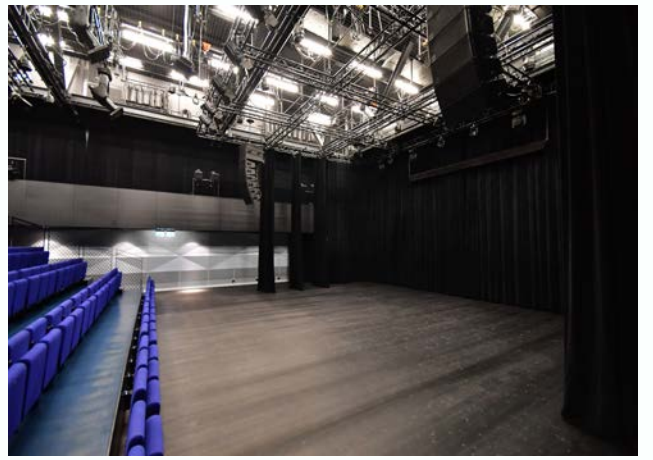
Martin xe300 (Martin IK42 amplifiers)

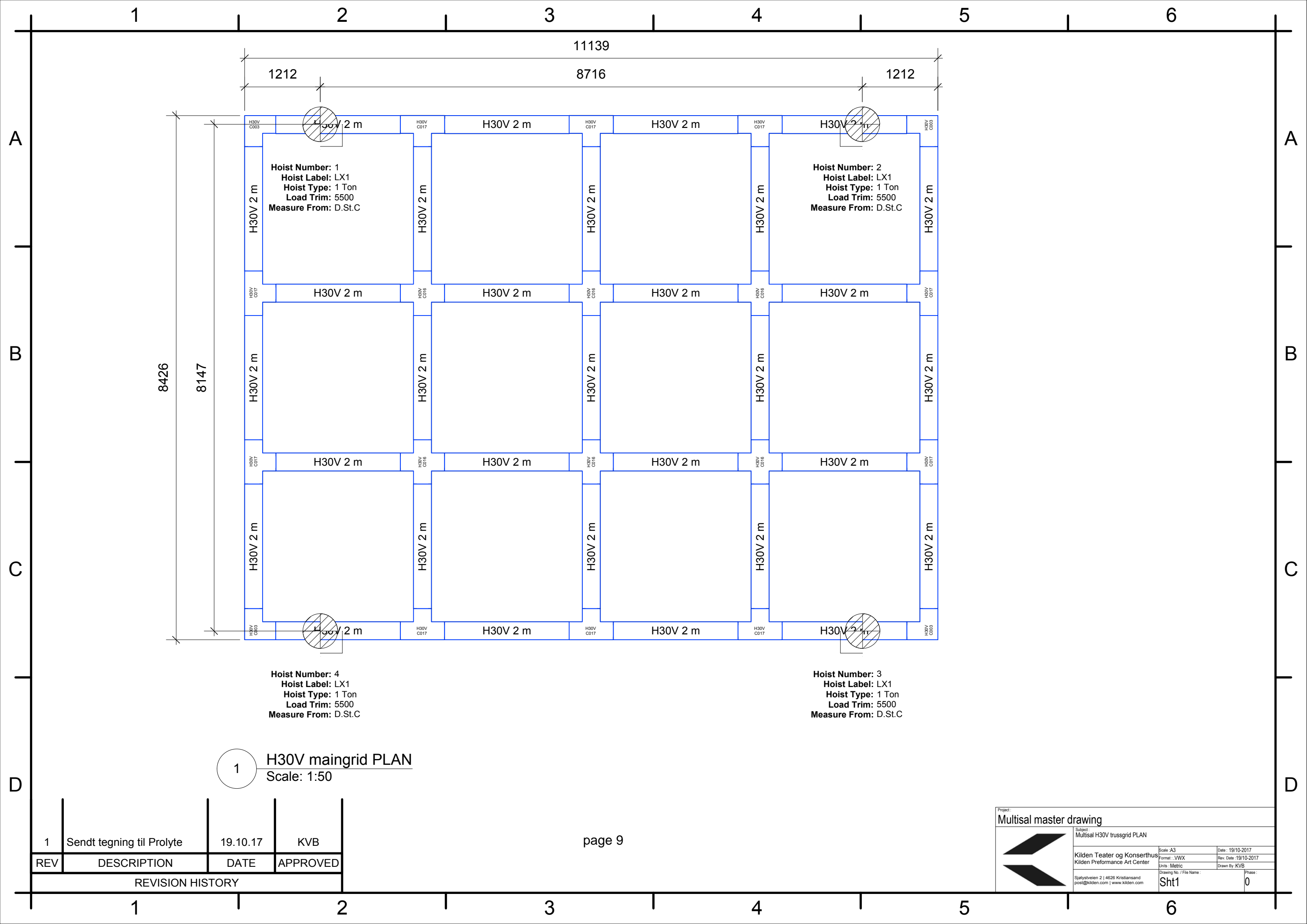
Note:

Additional sound resources, mixes, wireless system, belt packs, handhelds etc maybe available upon request. Please contact the technical coordinator in due time to discuss the needs of your production.

Kilden continuously update their technical specifications







Hoist Number: 1
Hoist Label: LX1
Hoist Type: 1 Ton
Load Trim: 5500
Measure From: D.St.C

Hoist Number: 2
Hoist Label: LX1
Hoist Type: 1 Ton
Load Trim: 5500
Measure From: D.St.C

Hoist Number: 4
Hoist Label: LX1
Hoist Type: 1 Ton
Load Trim: 5500
Measure From: D.St.C

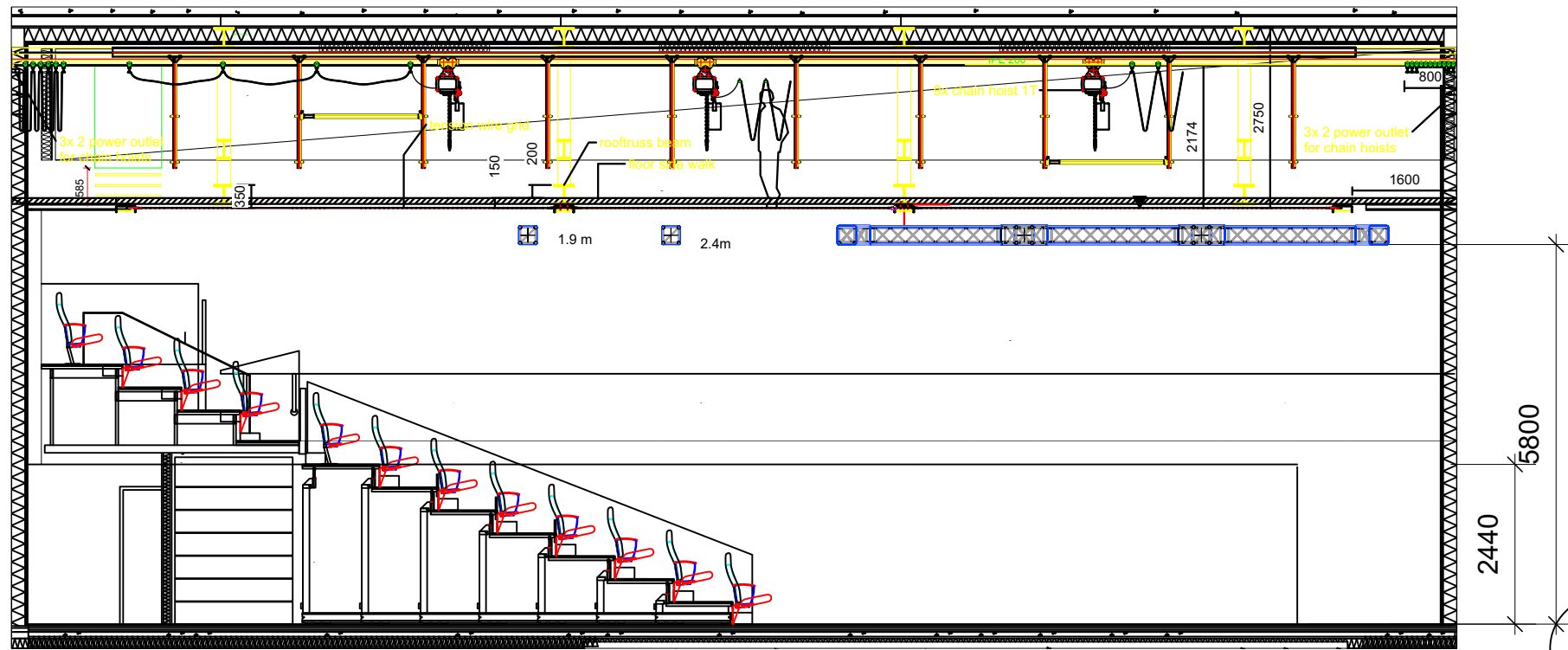
Hoist Number: 3
Hoist Label: LX1
Hoist Type: 1 Ton
Load Trim: 5500
Measure From: D.St.C

1 H30V maingrid PLAN
 Scale: 1:50

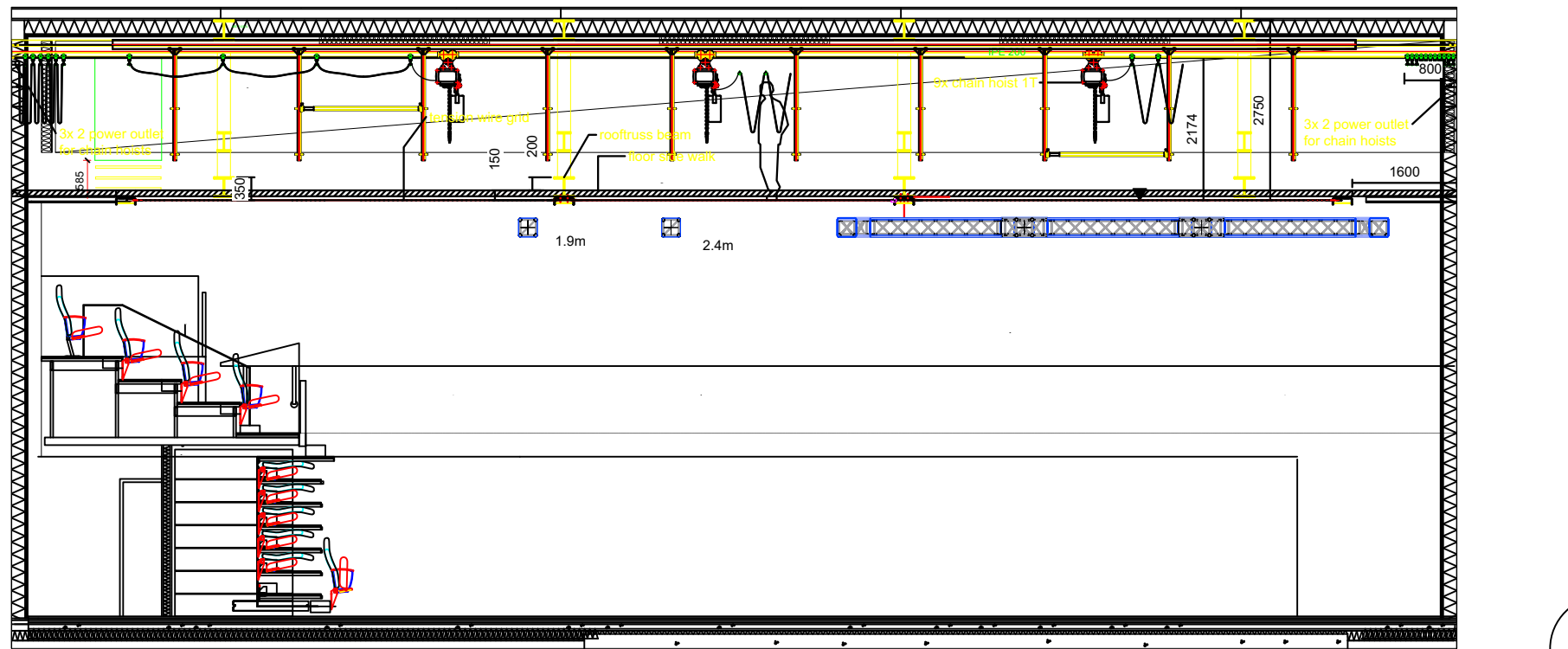
REV	DESCRIPTION	DATE	APPROVED
1	Sendt tegning til Prolyte	19.10.17	KVB

REVISION HISTORY

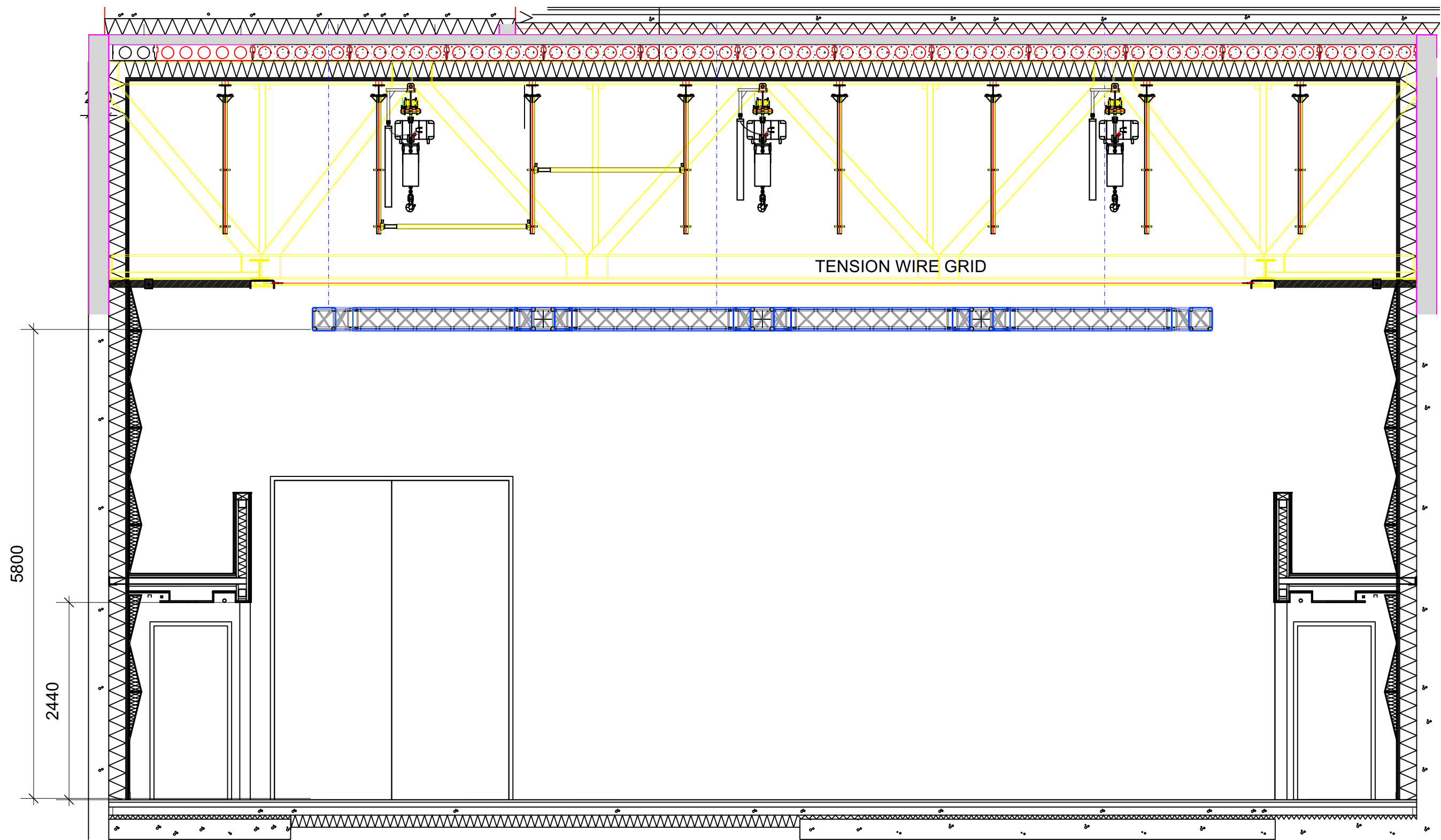
Project: Multisal master drawing			
Subject: Multisal H30V trussgrid PLAN			
	Kilden Teater og Konserthus	Scale: A3	Date: 19/10-2017
	Kilden Performance Art Center	Format: .VWX	Rev. Date: 19/10-2017
	Sjølystveien 2 4626 Kristiansand post@kilden.com www.kilden.com	Units: Metric	Drawn By: KVB
Drawing No. / File Name: Sht1		Phase: 0	

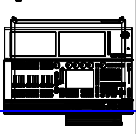
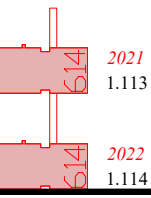
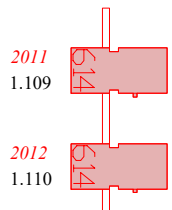
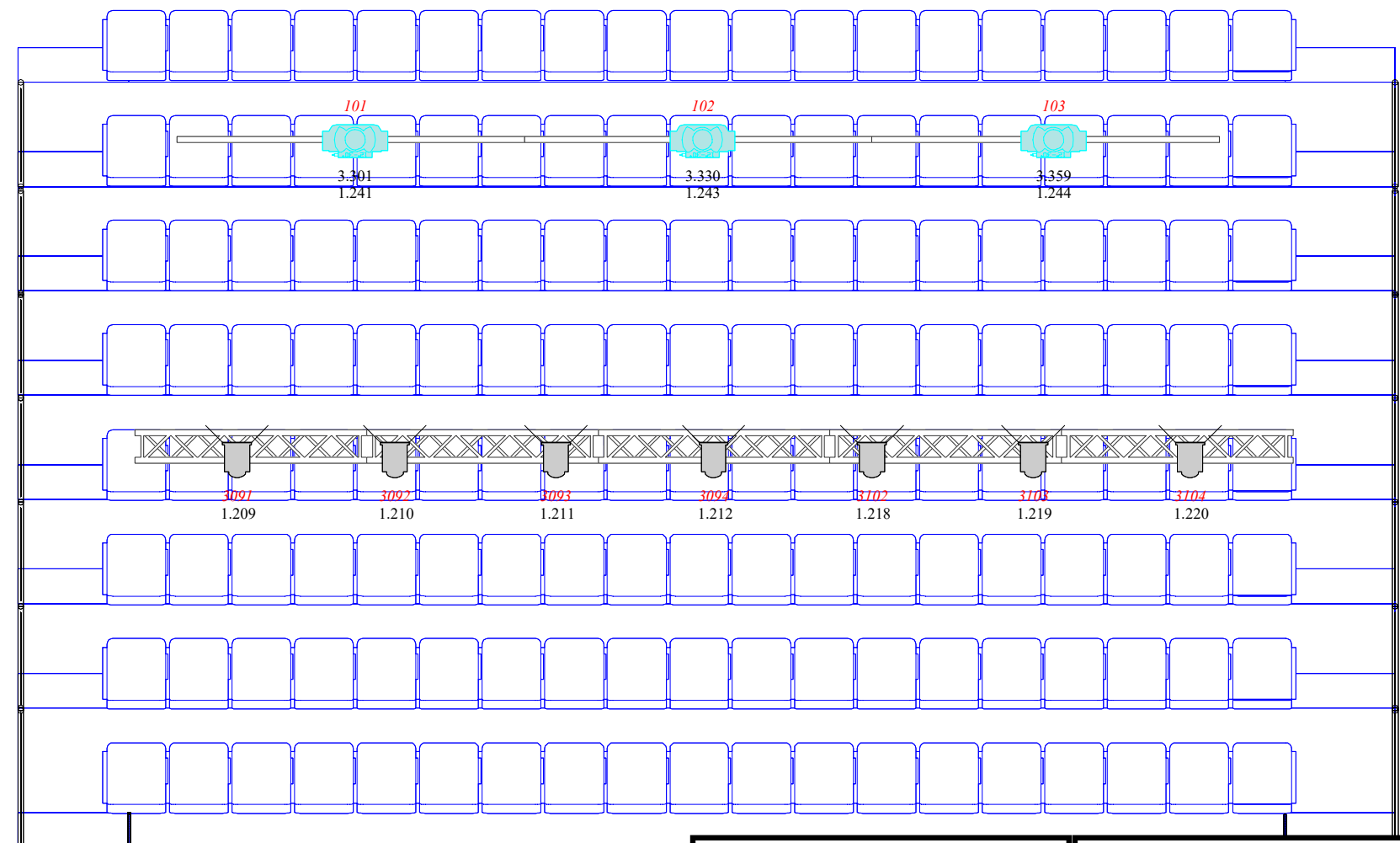
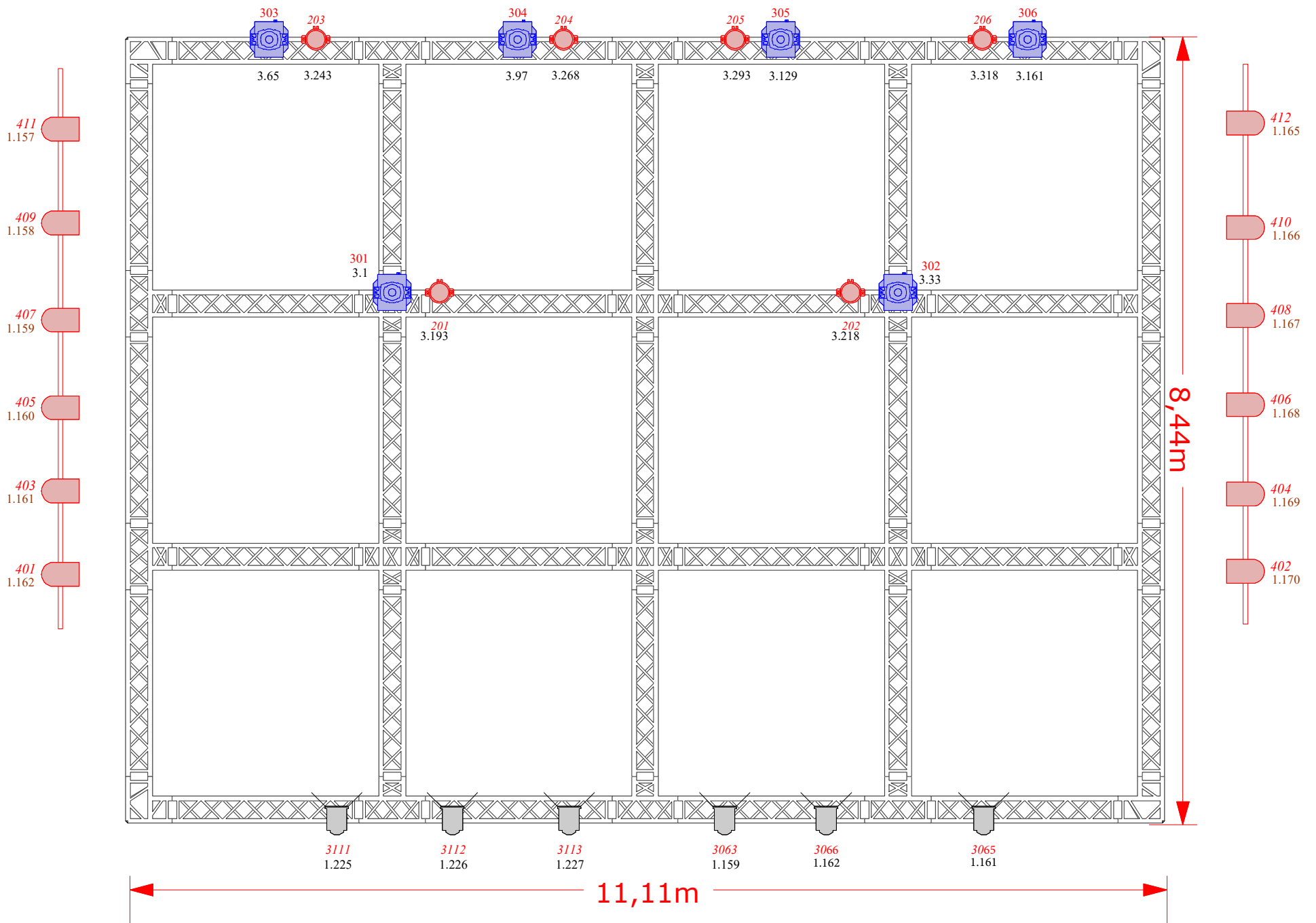


1 Seats Extended
Scale: 1:100



2 Seats retracted
Scale: 1:100





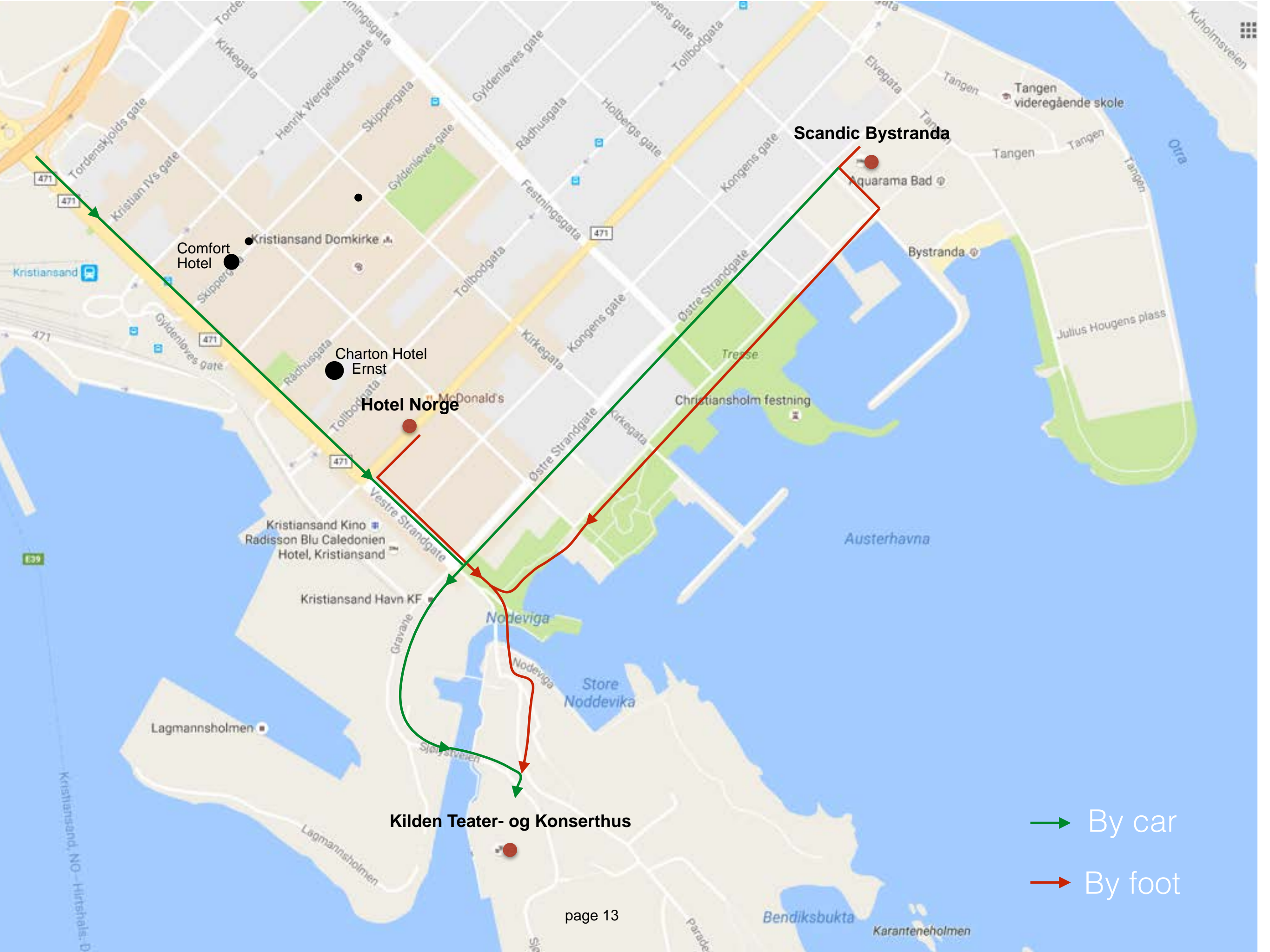
Page 12

NOTES

- Multisalen runs on sACN controlled by a grandMA3 Light
 - A standard lightingrig (as per plan) is available at all times and on failure to communicate within adequate antecedence KILDEN is not obligated to proceed with any changes
 - In all instances pertaining to rigging safety KILDENs technical personnel shall determine the appropriate measures to be taken
 - Use of atmospheric Haze or Strobe Lighting only if advised previously
- PAR64 - CP 62

FIXTURE SCHEDULE

Symbol	Name	Count
	ADB Warp 12-30deg	3
	Alpha Spot QWO 800	6
	RJ 310 HF	13
	RJ 614SX	4
	MAC Aura XB	6
	PAR 64	12



Comfort Hotel

Kristiansand Domkirke

Chariton Hotel Ernst

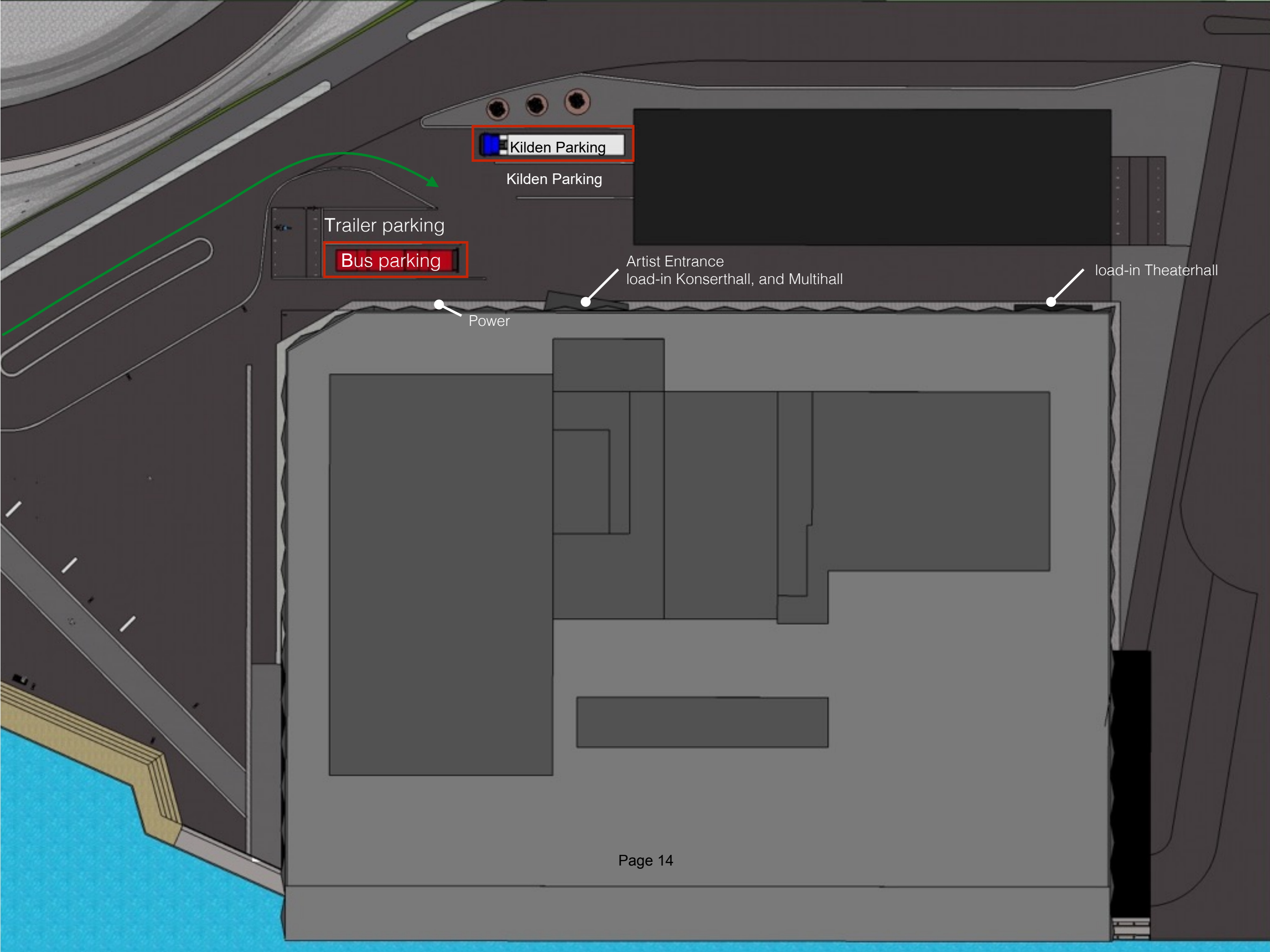
Hotel Norge

Scandic Bystranda

Kilden Teater- og Konserthus

By car

By foot



Kilden Parking

Kilden Parking

Trailer parking

Bus parking

Artist Entrance
load-in Konserthall, and Multihall

load-in Theaterhall

Power

