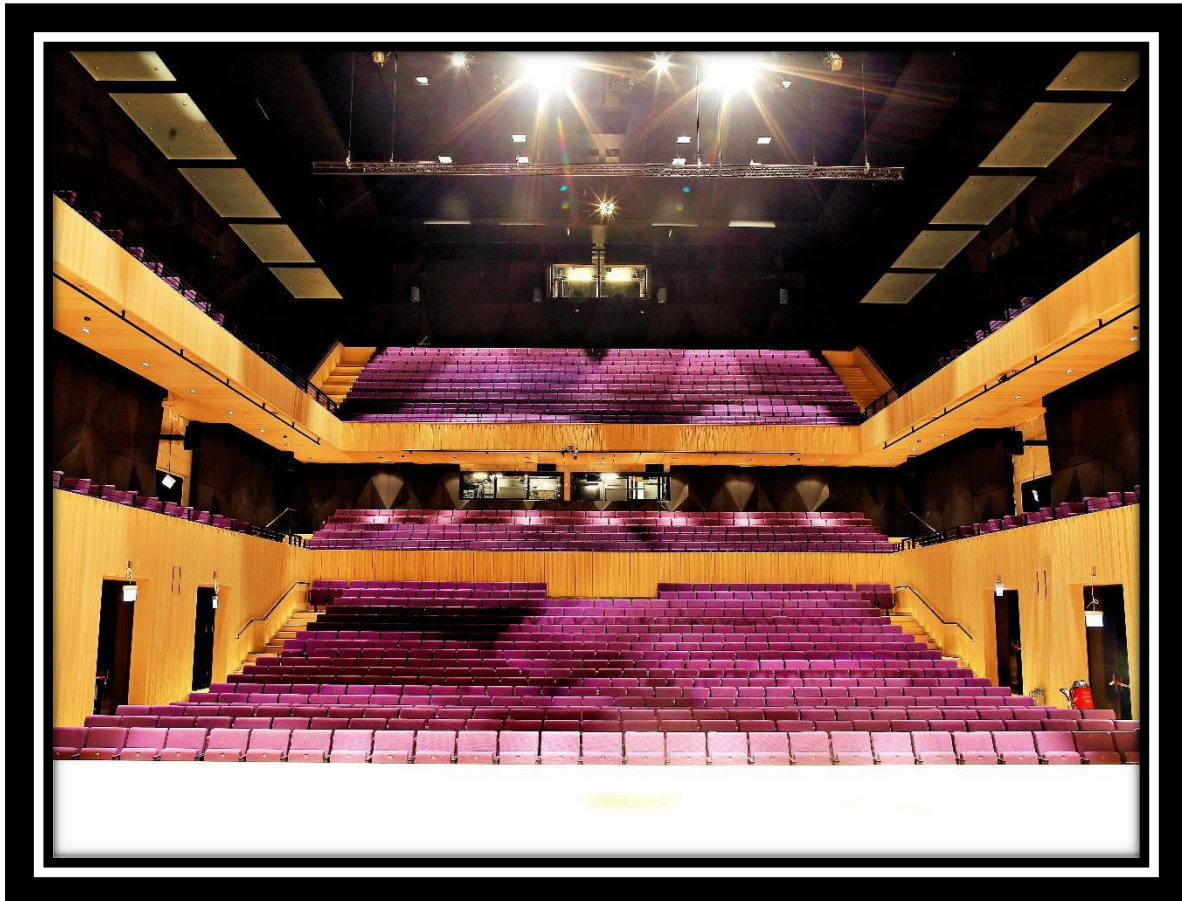


Kilden teater – og konserthus

TECHNICAL SPECIFICATIONS – Conserthall 2025



Contact info

Technical Coordinator: Shane Burke tlf: 9568092

E – mail: shane.burke@kilden.com

Concert Hall:**Auditorium:**

Kilden's concert hall is a top – class, splendid, modern arena which enhances solo and orchestral sound with moderate amounts of re-verb at all frequencies sustaining a fullness in sound.

Capacity:

Stalls: 519 + 3 wheelchairs.

Circle: 200.

Upper Circle: 312.

Note: Extra wheelchair spaces available with reduced capacity.

Extra 127 seats available for special acoustic performances.

Stage:

Width: 13.8 M U\S17.8M D\S + stairwell. (With Black Curtains in 12.50M \ 16.90m)

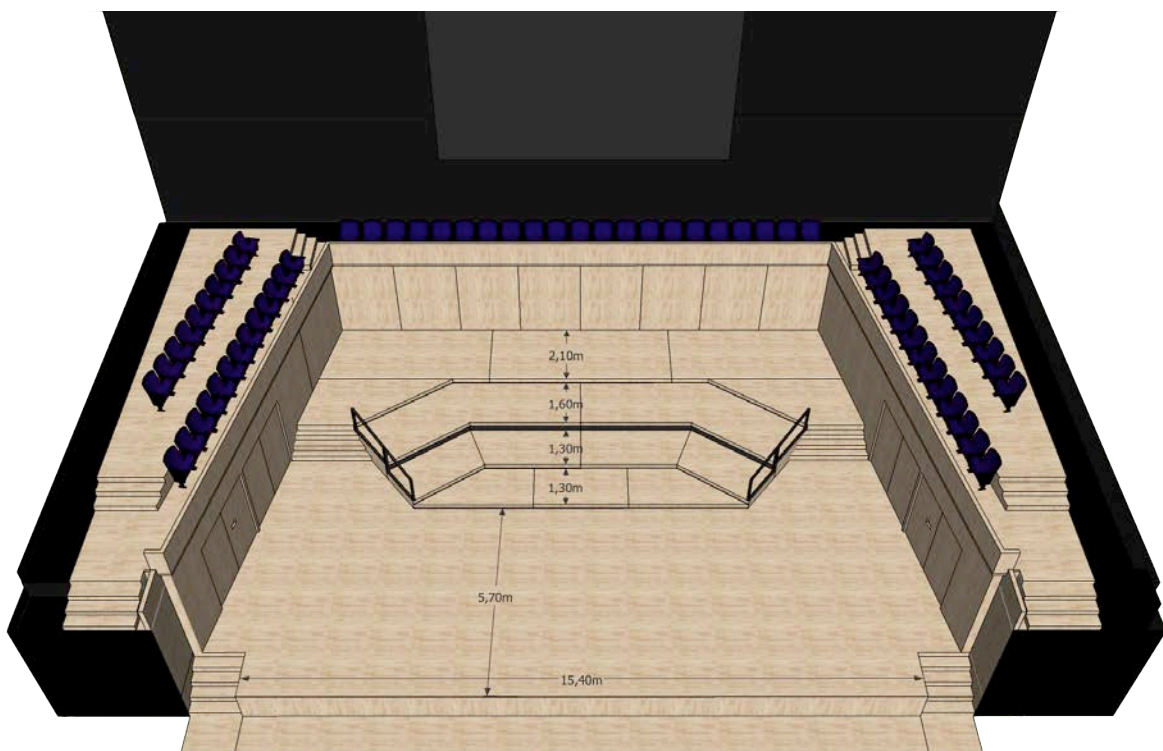
Depth: 12 M. (With Black Curtains in 10.80m)

Extended stage

Depth: 3.2 m extended out into the auditorium.

Stage Floor: Brown as in stage plot.

Note: Flat stage available on request and up stage wall can be remove for a get in.



Concert Hall Stage Plot

Power	Load Capacity	Placement
4x	63A 3P 400VAC CEE	Back Stage
2x	32A 3P 400VAC CEE	Back Stage
1x	16A 3P 400VAC CEE	Back Stage
2x	16A Schuko 230 VAC	Back Stage
1x	32A 3P 400VAC CEE	Loft

63AMP MAX per box

Tour Truck Power:

Power	Load Capacity	Placement
3x	63A 3P 400VAC CEE	Next to parking space
1x	32A 3P 400VAC CEE	Next to parking space
1x	16A 3P 400VAC CEE	Next to parking space
2x	16A 3P Schuko VAC	Next to parking space

63AMP MAX per box

Back Stage Area:

Size 224.45 m²

No quick-change room available, however one can be arranged if requested and agreed.

Wheelchair toilet available next to backstage.

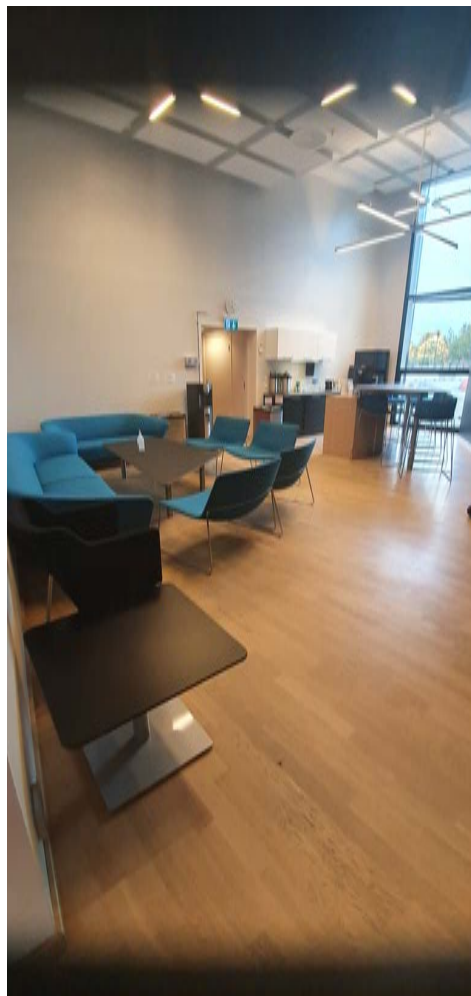
Greenroom available 12 meters from S\R wing entrance



Concert Hall Back stage area



Stage Right Wing Entrances: W 2.88 M, H 2.9 M.



Concert Hall Greenroom

Access

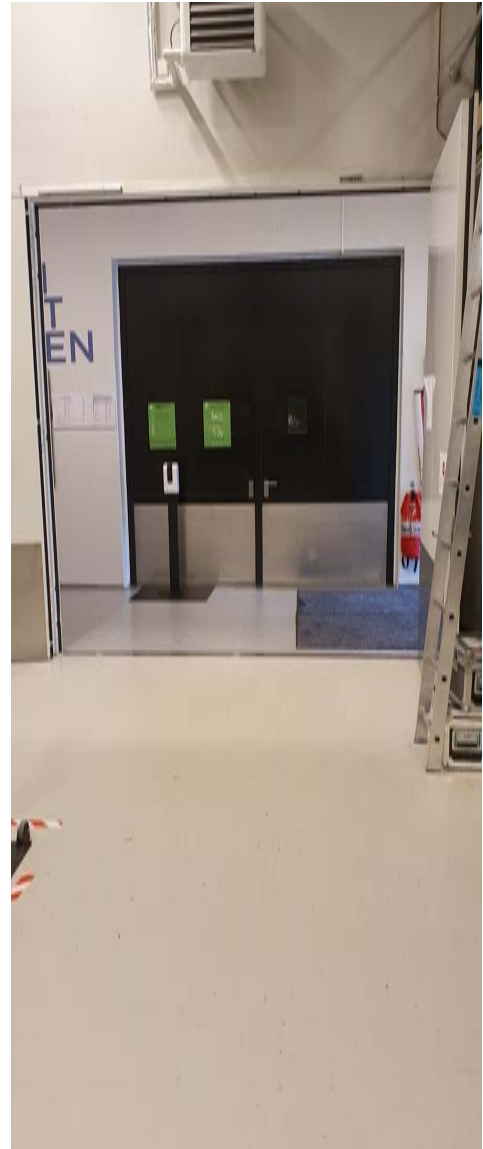
Access to stage via loading dock door through stage fire gate. Loading dock at stage level no ramps or steps.

2 x Stage Fire door: W. 2.85m H. 2.9 m

Loading dock gate: W. 3.5m H. 3.7 m

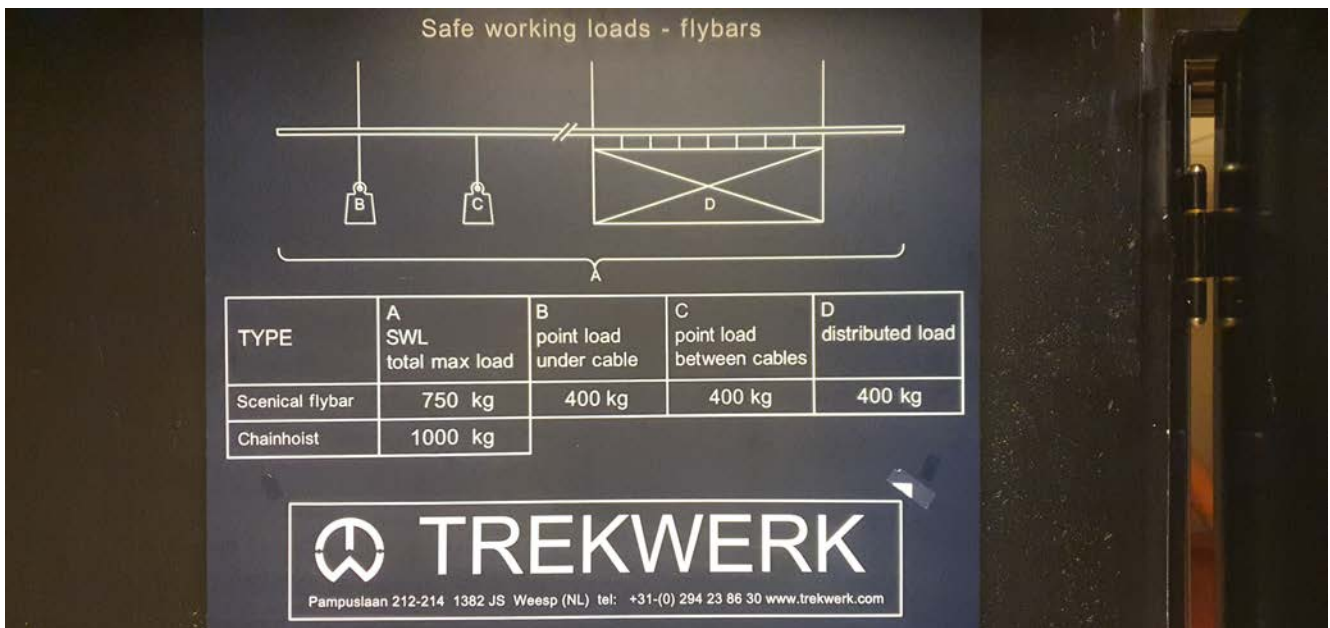


Loading Bay Door



2x Fire Doors.

Flying System



Automated 8 x (H30D) Lighting truss 15 m long (1-8) Maximum weight 750 kg with a point load of 400kg.

Note: No. 5 truss is 14m long.

Maximum Flying height 16.5 m

Note: The venue has glass acoustic reflectors over the stage with a maximum flying of 14.5m. **See Drawings**

Extra Motors & trusses.

2x 500 Kg extra motors with multiple hanging points.

4x 1000 Kg extra motors with multiple Hanging points.

12 m H 30 V truss.

Note: Extra motors and trusses maybe available on request.

Curtains

Blacks velour available to cover completely around the stage area

6 stk 7m x 14m blacks

4 stk 2.5m x 4m blacks

2 stk 3.5m x 4m blacks

2 stk 4m x 4m blacks

Note: Extra blacks maybe available on request.

JLG Scissor Lift:

JLG 2630ES (working height 7.9 m)

2 x Vertical Mast lifts

Working height 12m & 9.5m (max load 150 kg & 125 kg)

Ladders:

3x Zarges, tallest has a max height of 6.1 m and 150 kg max load. Numerous A Frame ladders, tallest A Frame has a max height of 2.5 m. Note: All ladders and mechanical lifts are for all venues. **Please check availability**

Communication:

All dressing rooms are located on the 2nd floor numbers 4 till 10 when needed. All dressing rooms have a shower and a live audio link to the concert hall. There are Walkie Talkies available with earpieces for communication between your company and the crew.



Dressing Room 5

Laundry:

Located on 2nd floor, 2 x washing Machines, 1 x Dryer and ironing facilities with the laundry facilities been shared among all our venues.

Note:

Stage podiums, dance marley, music stands, note lamps, rigging and grand pianos etc available by appointment. Please contact the technical coordinator in due time to discuss the needs of your production.

Lighting

Haze / smoke and pyro – effects.

Kilden are not allowed to disconnect parts of, or the total fire detection system at Kilden. The detectors are adjusted to take a moderate amount of haze/smoke. All use of haze/smoke or pyro effects must be tested and approved by the technician responsible for the specific performance at Kilden.

Console: IP 192.168.221.001

Grand MA 3 with 8 Universe's Scan/artnet or dmx connection available.

Profiles:

Source 4 750W 19° (fixed position conductor) 2 pcs

Fresnel:

Robert Juliat 310HF 1200W (fixed position front lighting) 20 pcs

Robert Juliat 329HF 2500W (fixed position front lighting) 4 pcs

Parcans:

Par64 38 pcs

Moving Heads:

Viper XIP 8 pcs

Martin Mac Encore Performance CLD 12 pcs

Martin Mac Aura XB 14 pcs

Dimmers:

AVAB CAB Modular dimmer rack from State Automation "Australia" 236

236 x 3 kw patchable dimmer circuits.

135 x 3 kw patchable non dim relay circuits.

8 x 5 kw patchable non-dim relay circuits.

48 x 3 kw patchable sinus dimmer circuits.

Smoke:

MDG Atmosphere Haze Generator 1 pcs

Follow Spot:

Robert Juliat Cyrano 2500 HMI 2 pcs

Note:

Additional light sources, side lighting etc. maybe available by appointment. Please contact the technical coordinator in due time to discuss the needs of your production.

Av:

30K Digital Projection Satelite Titan Head 4K-UHD only for front projection screens.

Kilden has 15 k EB -L17755U projectors for back projection and backdrops.(Rigged on request)

Projector Screen:

A verity of screens available please check.

Signal Distribution:

Video distribution via SDI – terminated coaxial cable. Cable is specified to carry 3G SDI signal.

Locations of termination points:

Back stage:	1x SL & SR		
Stage:	5x boxes across D\S		
FOH:	1x Sound side		
1 st floor	1x U\S	2x S\L	2x S\R
2 nd floor		2x S\L	2x S\R
Loft.	1x Auditorium	1x S\L	1x S\R

Note:

Additional AV equipment maybe available by appointment. Please contact the technical coordinator in due time to discuss the needs of your production.

Lyd PA**BSS Soundweb matrix/matrise****20x d&b audiotechnik KSL-serie linjearray****6x d&b audiotechnik KSL-serie sub flown/flydd****6x d&b audiotechnik 44S frontfill****14x JBL AC2212, 4x JBL AC28 og 2x JBL C322C surroundlyd (6 kanaler) (Crown forsterkere)****Main PA is runs on d&b ArrayProcessing****Mixer:**

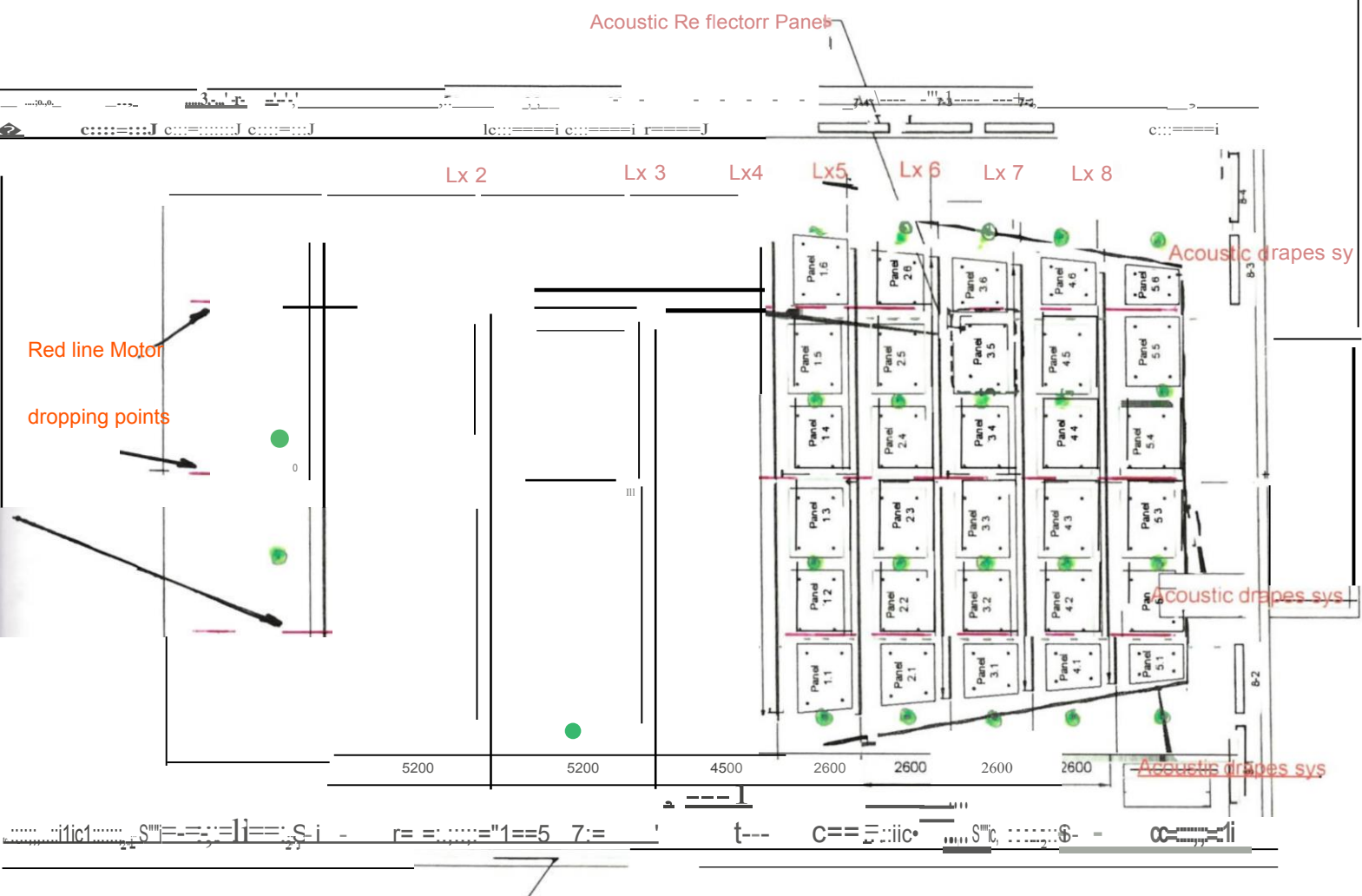
Soundcraft Vi7000 w / free madi card and available Dante card, wired to FOH 64 in / 32 out - stage rack.

Monitors:

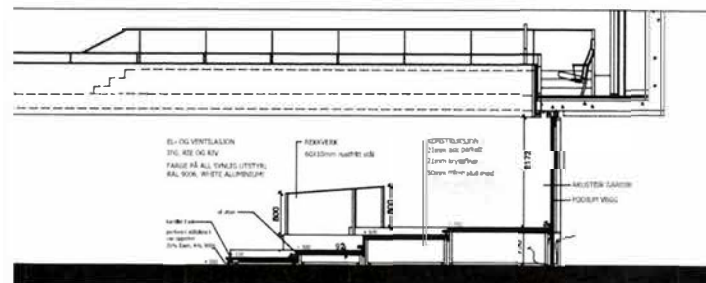
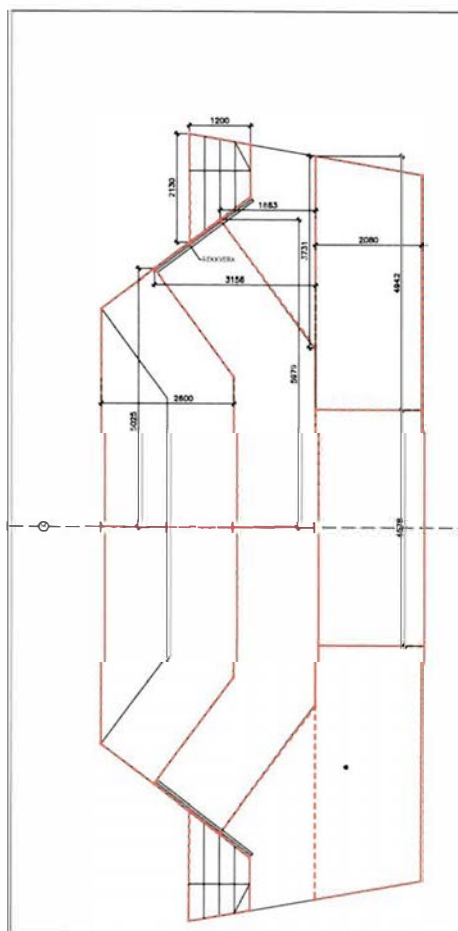
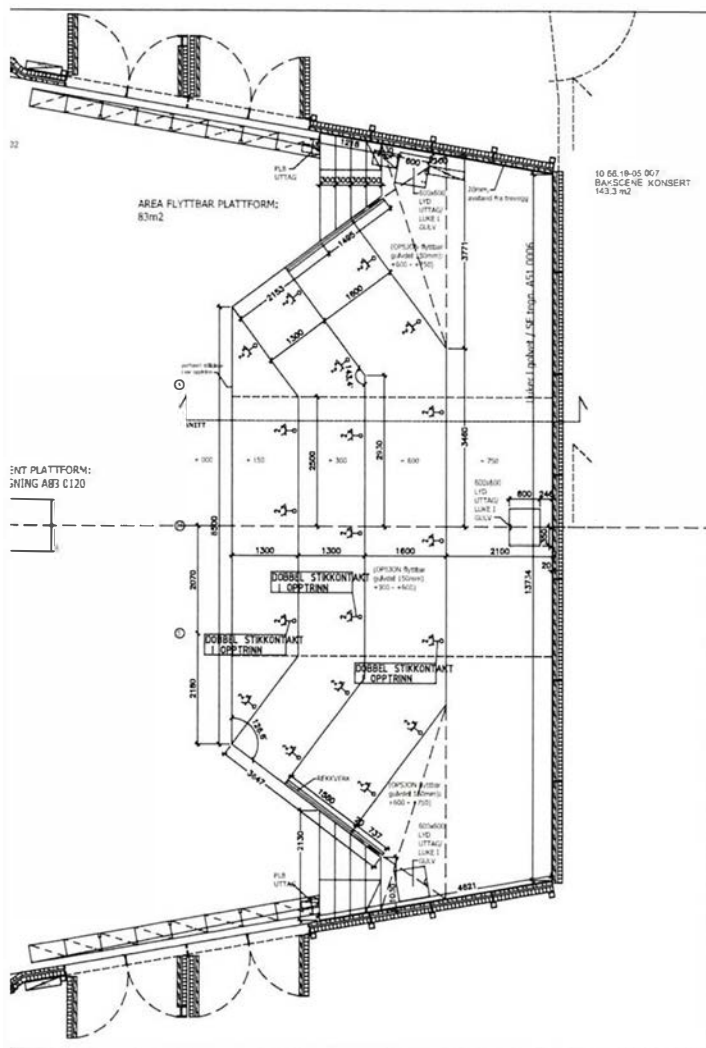
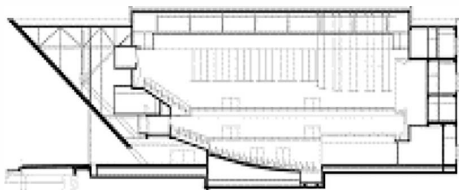
Martin XE 300 (Martin IK amplifier)

Note:

Additional sound equipment maybe available by appointment. Please contact the technical coordinator in due time to discuss the needs of your production.

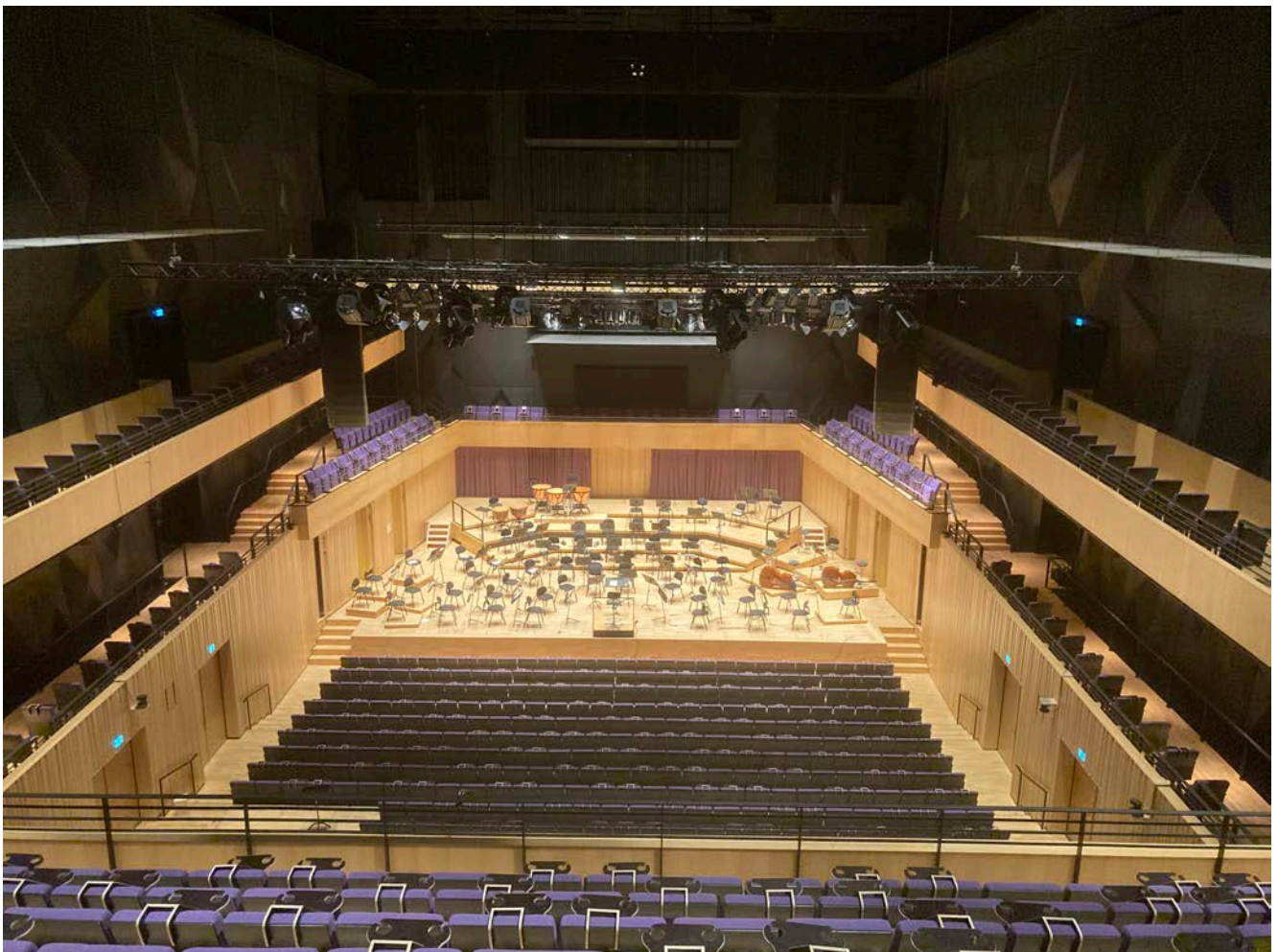


Concert Hall Plan





Concert Hall side view



Concert Hall



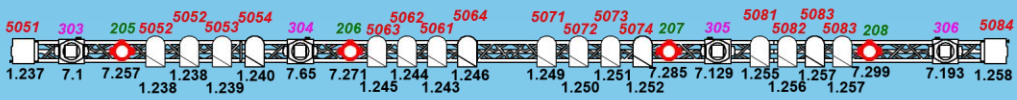
Konsersalen Sort bakkteppt /sidebein fra galleri.

High Black Back Curtain

Truss 8



Truss 7



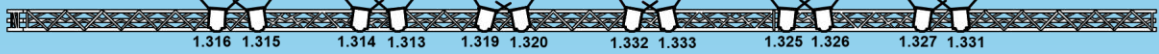
Truss 6



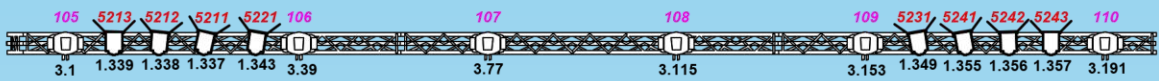
Truss 5



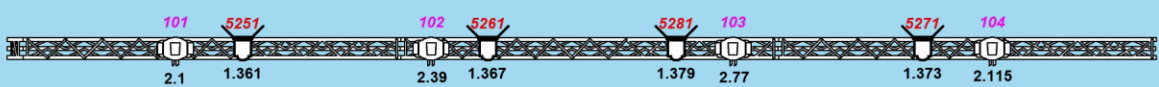
Truss 4












Truss 3

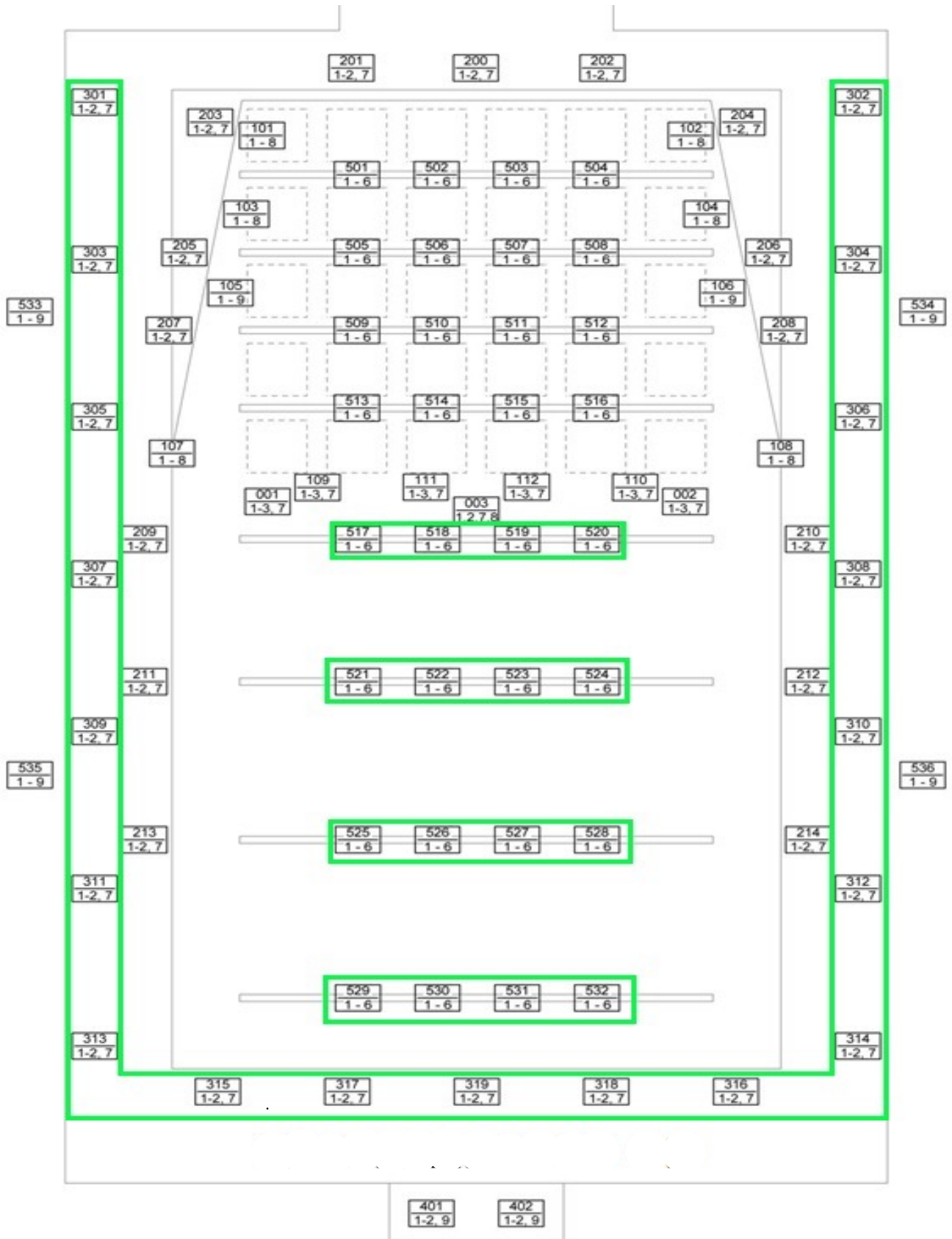


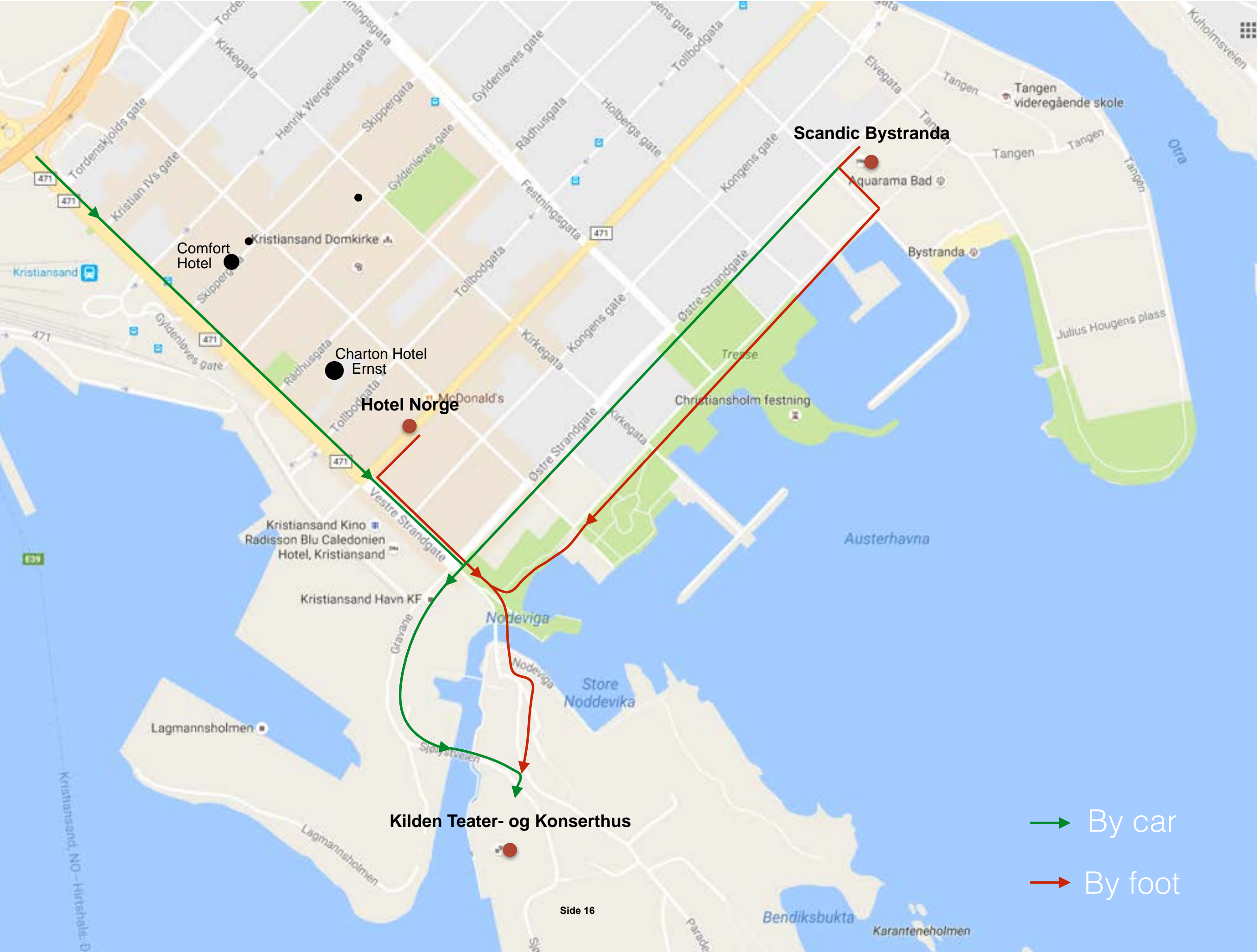
Truss 2



Symbol	Name	Count	Spares	Wattage	Lamp	Lens	Mode	# Channels
	Cyrano	2		2500	HMI 2500			1
	310 HF; 310 HF Barndoor [1]	20		1000	CP/70 230V			1
	329 HF; 329 HF Barndoor [1]	4		2000	CP/92 230V			1
	CE Source 4 750	2		750	HPL 750W/230V	19 Degree		1
	MAC Aura XB	14		400	LED		Std.	14
	PAR 64	44		1000	CP/61 240V - NSP			1
	De Sisti Leonardo 2kW Pole Op	6		2000	CP/73 230V			1
	MAC Viper XiP	8		1040	LED		Ext.	64
	Mac Encore Performance CLD	12		580	LED 6000K			38

side 14





Comfort Hotel

Charton Hotel Ernst

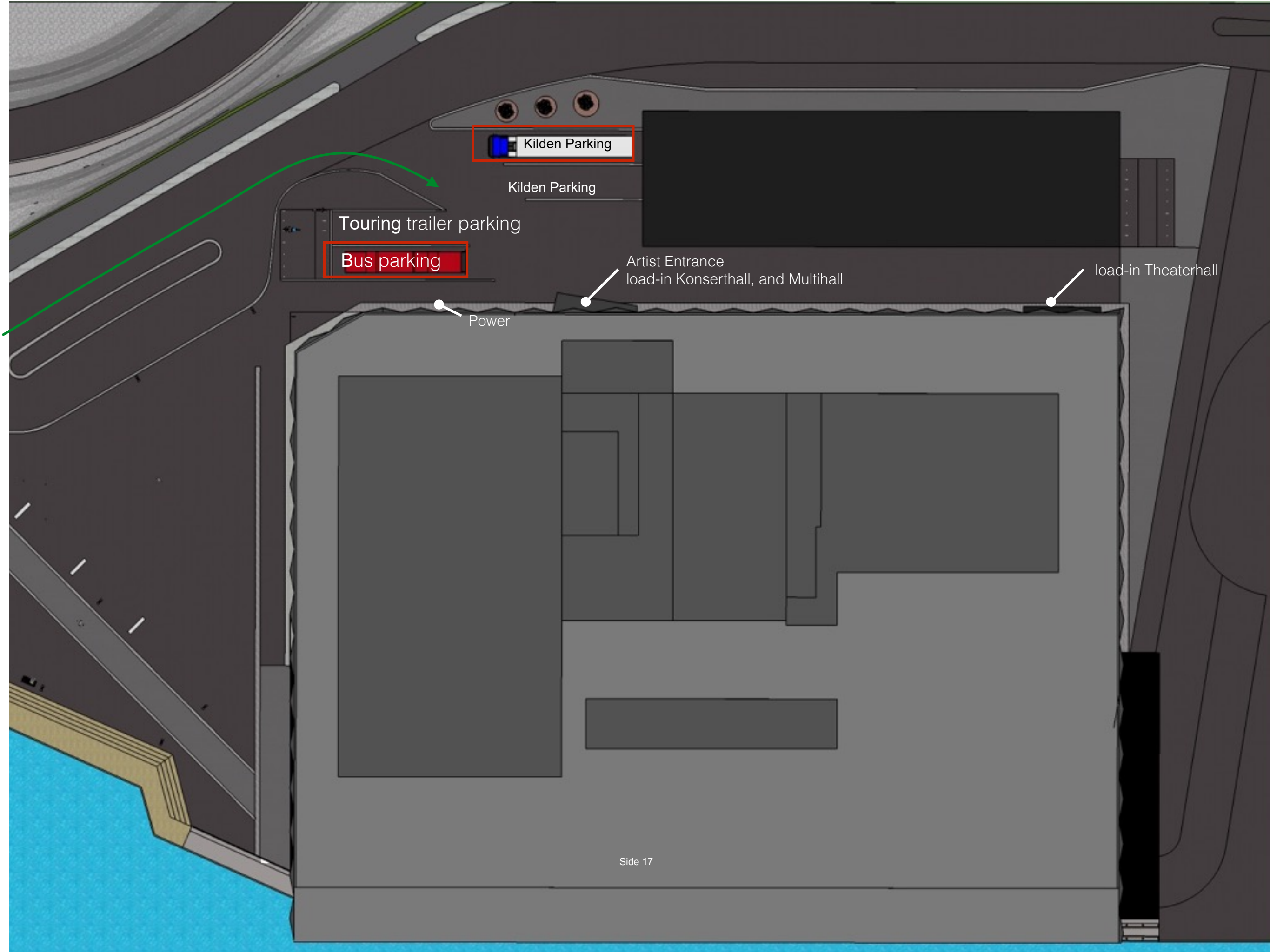
Hotel Norge

Scandic Bystranda

Kilden Teater- og Konserthus

→ By car

→ By foot



Kilden Parking

Kilden Parking

Touring trailer parking

Bus parking

Artist Entrance
load-in Konserthall, and Multihall

load-in Theaterhall

Power

