

Kilden teater – og konserthal

TECHNICAL SPECIFICATIONS – INTIMSALEN 2025



Contact info

Technical Coordinator: Shane Burke tlf: 9568092

E – mail: shane.burke@kilden.com

Intimsalen:

Auditorium:

The venue is a flexible "Black box" with removeable seating and risers.

Stage:

Width: 13.5 m (without legs)

Depth: 6.35 m (with standard full seating in)

Hight: 4.75m

Floor: Black

Audience capacity of 100 with full seating in.

We only have black curtains for up stage wall.

Maximum of 63 performers allowed on standard stage.

There is one entrance for audience and a separate lighting and sound control room.

NB! There are 2 fire exits, one of which is Stage Right. [See Photos.](#)

Power:

Load Capacity:

Placement:

1 x	63A	3P	400VAC	CEE	Stage	Floor	Auditorium	left
1x	32A	3P	400VAC	CEE	Stage	Floor	Auditorium	left
1x	16A	3P	400VAC	CEE	Stage	Floor	Auditorium	left
2x	16A	Schuko	230	VAC	Stage	Floor	Auditorium	left

63A MAX per box

Backstage area:

Size 52m sq. shared space.

Yes, there is a quick-change dressing room.

1 x Wheelchair accessible toilet on 3rd floor near stage Small

Green room available in the backstage dressing room

Access:

Access to stage via loading dock door and take a lift to 3rd floor. Loading dock at ground level with no steps or ramps.

Lift Area: 8.4 m sq. (2.4m \ 3.5m) **Max: Load 5000kg 66 people**

Loading dock gate ground floor	W. 3.5 m	H. 3.7 m
Lift Door	W. 2.0 m	H. 3.0 m
Stage door 3 rd floor	W. 2.6 m	H. 2.9 m
Stage Fire door:	W. 3.3 m	H. 2.85 m



Lift to stage door on the 3rd floor.

Flying system:

Automated 4 x 10 m truss with 2 x 1-ton motors. 150 kg \m or 625kg CPL. P.A on 1-ton motors.

Curtains:

Blacks velour on rails along the upstage wall no standard index beyond this. Extra blacks can be hung on 4 lighting trusses provided it is agreed beforehand.

JLG Scissor Lift:

JLG 2630ES (working height 7.9 m)

2 x Vertical Lift, Mast lift:

Working height 12m& 9.5m (max load 150 kg & 125kg)

Ladders:

3x Zarges, tallest has a max height of 6.1 m and 150 kg max load. Numerous A Frame ladders, tallest A Frame has a max height of 2.5 m. Note: All ladders and mechanical lifts are for all venues. **Please check availability**

Communication:

All dressing rooms have a live link to your venue. There are Walkie Talkies available with earpieces for communication between your company and crew.

Laundry:

Located on 2nd floor, 2 x washing Machines, 1 x Dryer and ironing facilities. Note: Laundry is for all venues.

Note:

Stage podiums, dance Marley, music stands, note lamps, rigging and grand pianos etc available by appointment. Please contact the technical coordinator in due time to discuss the needs of your production.

LIGHTING:

Haze/smoke and pyro-effects.

Kilden are not allowed to disconnect parts of, or the total fire detection system at Kilden. The detectors are adjusted to take a moderate amount of haze/smoke. All use of haze/smoke or pyro effects must be tested and approved by the technician responsible for the specific performance at Kilden.

Merk:

On 11.2.21 Kilden has been recertified as an environmental lighthouse for a 3-year period. As a result, Kilden has a stronger policy when it comes to the use of stage smoke & haze. For further information please contact Kilden's Technical Co-ordinator or check link <https://eco-lighthouse.org/>

Console: IP. 192.168.241.001

Grand MA 3 Light with 3 Universe's sCAN \ artnet or dmx connection available.

Profiles:

RobertJuliat613sx1200w28/54°zoom profile	11 pcs
--	--------

Robert Juliat 614sx 1200w 16/36° zoom profile	12 pcs
---	--------

Fresnel:

Robert Juliat 310HF 1200W	12pcs
---------------------------	-------

Pars :

Thomas Pars 64	10 pcs
----------------	--------

Moving Heads:

ADB Warp – 800w 12/30° + Rainbow 8" (Fixed position)	4pcs
--	------

Mac Era 150	8pcs
-------------	------

Diadlo s	4pcs
----------	------

Dimmer

SRS NDP12

Dimmer 204 x 3kw dimmerkurser & direktestrømkurser .

Haze :

MDG Atmosphere	1 PCS
----------------	-------

Note:

Additional light sources, side lighting etc. maybe available upon request. Please contact the technical coordinator in due time to discuss the needs of your production.

Av :

Epson 6 k EB - L17755U Projector.

Projector screen :

White screen W. 3 m, H. 1.7m

Signal Distribution:

Video distribution via SDI -terminated coaxial cable. Cable is specified to carry 3G SDI signals. 4 times 2 termination points (signal to\from box) located at stage floor, center of each wall. 2 times 2 termination points (signal to\from box) located on technical gallery. Located center of room SL\SR

Note:

Assorted Projectors, AV – equipment plus extra cable is available upon request. Please contact the technical coordinator in due time to discuss the needs of your production.

Sound:**Speakers\ P.A:**

BSS Soundweb matrix

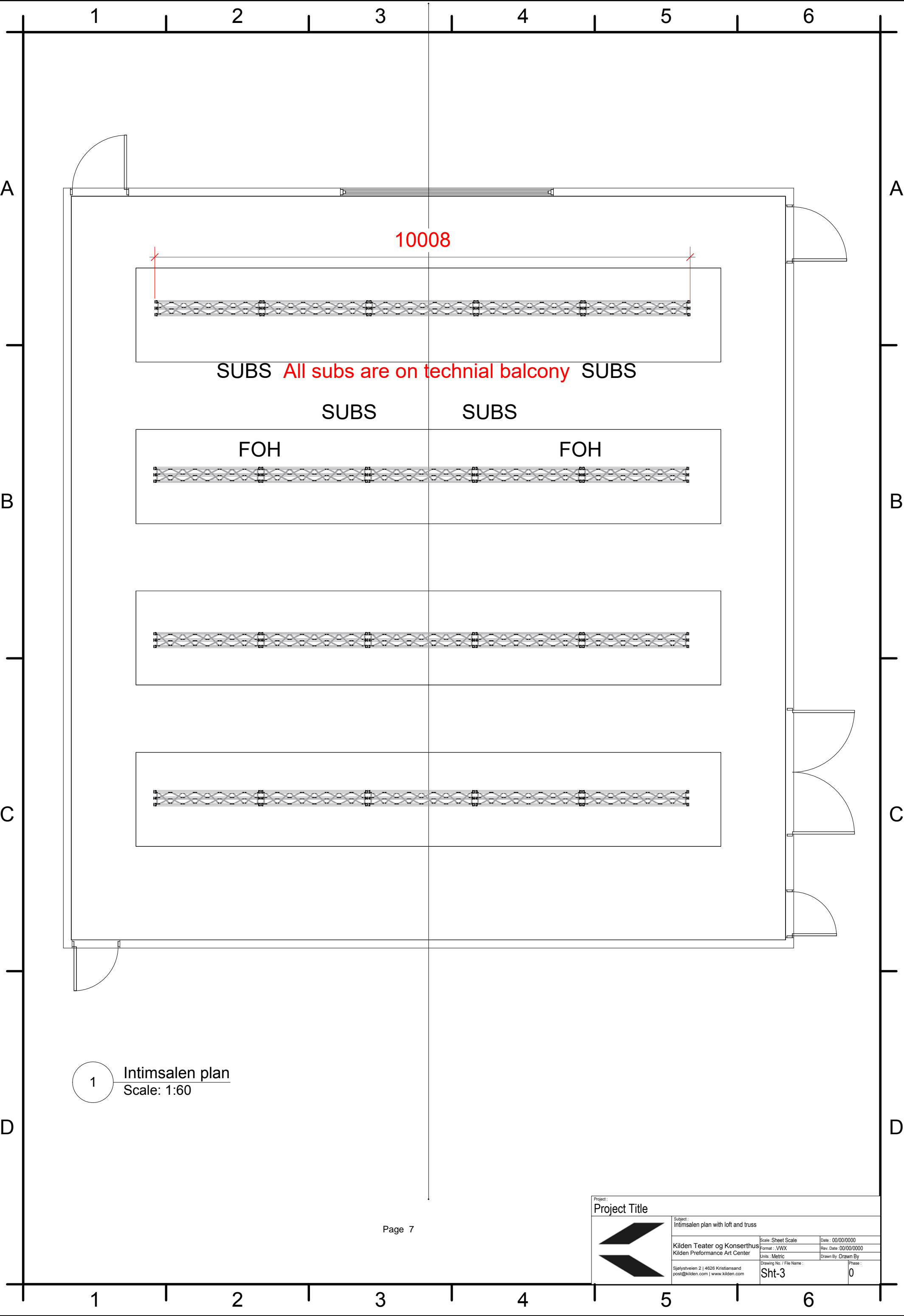
2x d&b audiotechnik Y7p (d&b D80 amplifiers)

2x d&b audiotechnik Y10p(d&b D80 amplifiers)

4x d&b audiotechnik Y-series sub

Note:

Additional sound resources, mixes, wireless system, belt packs, handhelds etc maybe available upon request. Please contact the technical coordinator in due time to discuss the needs of your production.



SUBS All subs are on technical balcony SUBS

SUBS

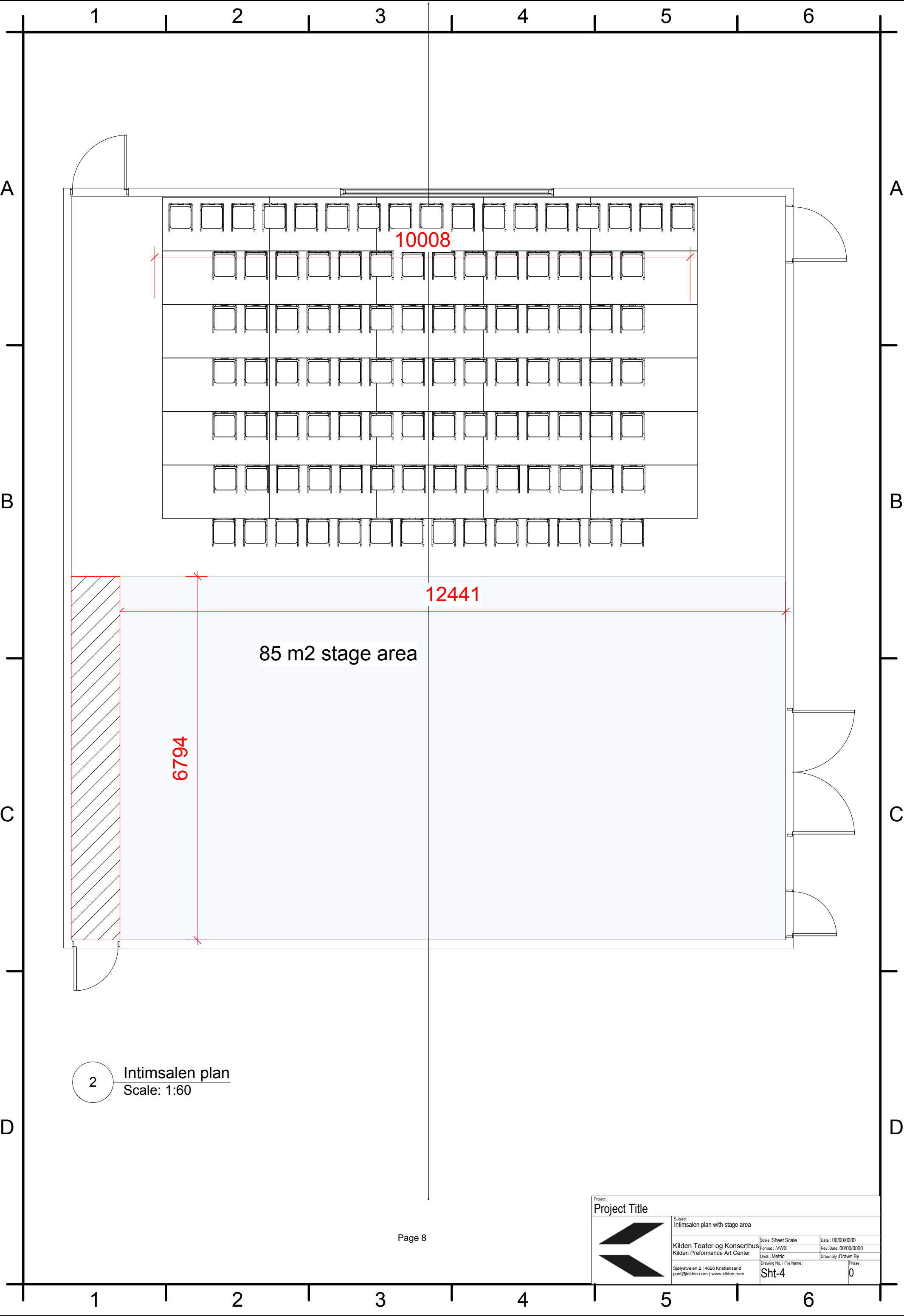
SUBS

FOH

FOH

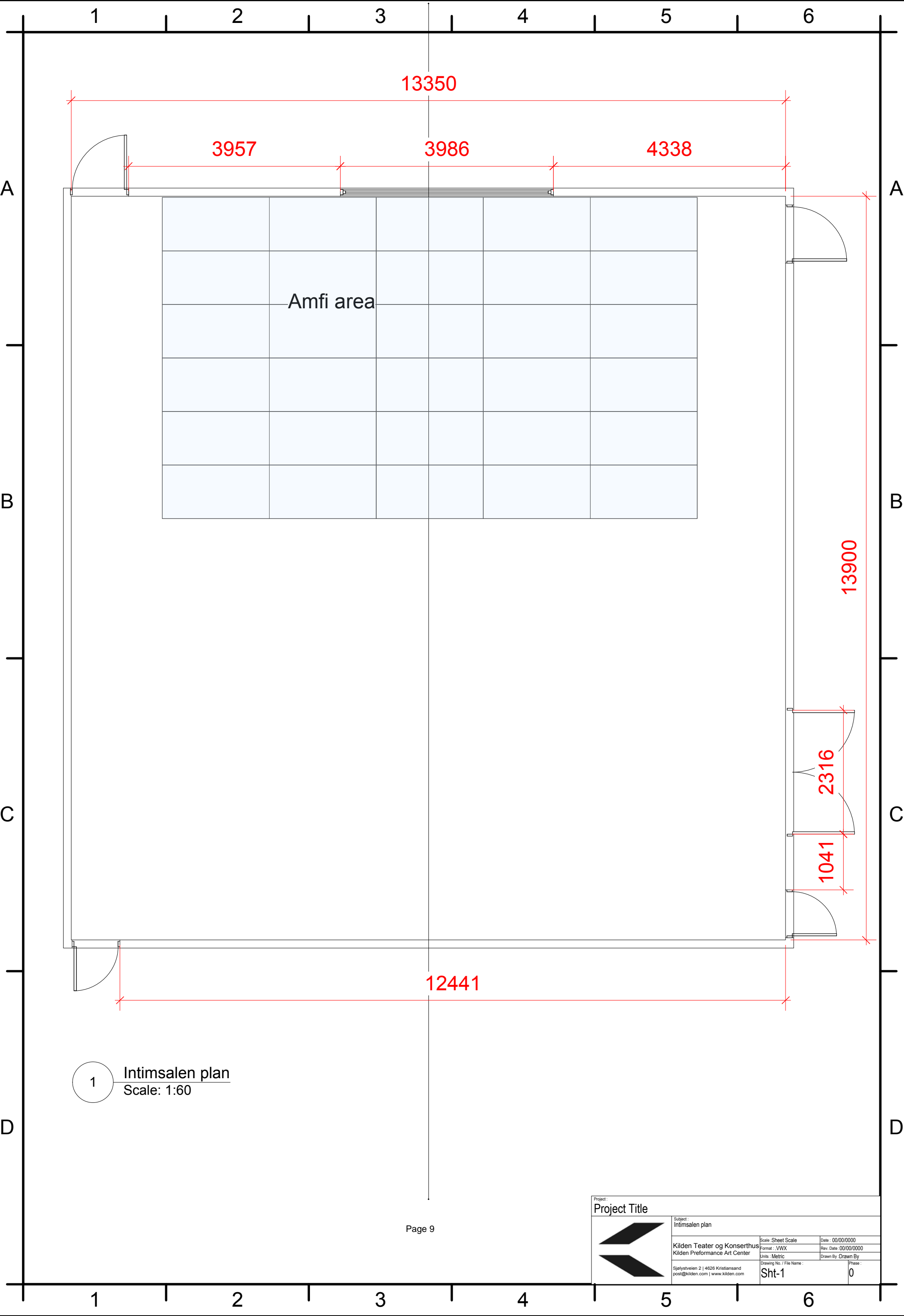
1 Intimsalen plan
Scale: 1:60

Project Title			
Subject : Intimsalen plan with loft and truss			
	Kilden Teater og Konserthus Kilden Performance Art Center		Scale : Sheet Scale
	Sjøløystveien 2 4626 Kristiansand post@kilden.com www.kilden.com		Date : 00/00/0000
	Drawing No. / File Name : Sht-3		Rev. Date : 00/00/0000
			Drawn By : 0



2 Intimsalen plan
Scale: 1:60

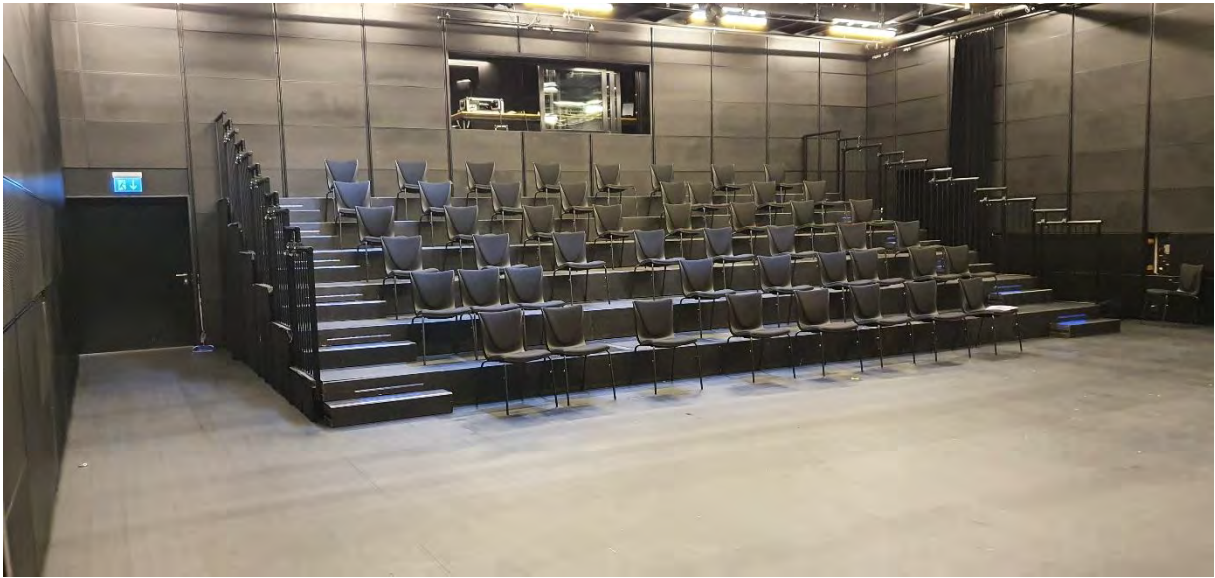
Project : Project Title			
	Subject : Intimsalen plan with stage area		
	Scale : Sheet Scale		Date : 00/00/0000
	Kilden Teater og Konserthus Kilden Performance Art Center		Format : VWX Rev. Date : 00/00/0000
	Sjølystveien 2 4626 Kristiansand post@kilden.com www.kilden.com		Units : Metric Drawing No. / File Name : Sht-4 Phase : 0

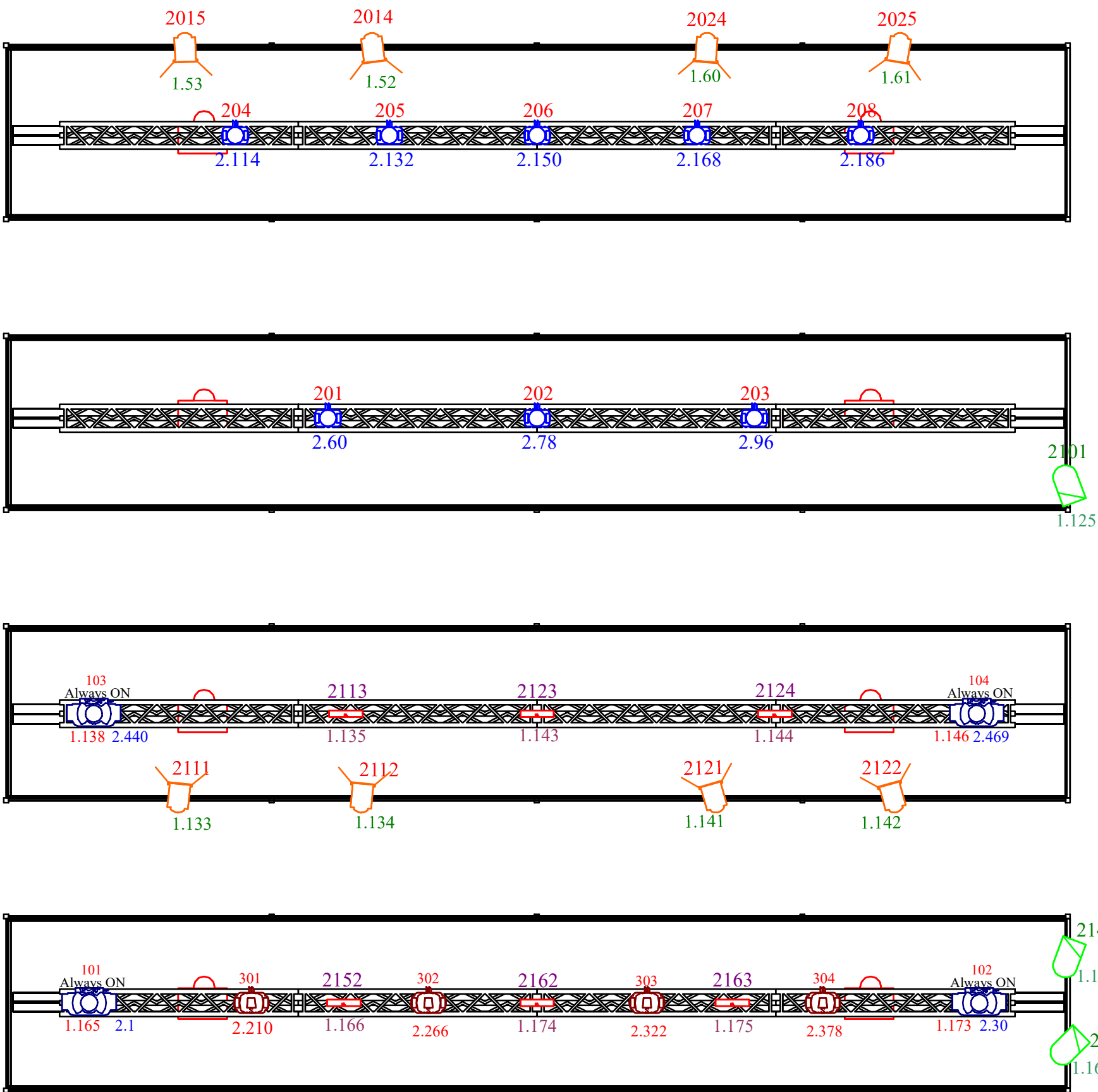








1 Intimsalen plan
Scale: 1:60

Project : Project Title			
	Subject : Intimsalen plan		
	Kilden Teater og Konserthus Kilden Performance Art Center		Scale : Sheet Scale Format : VWX
	Sjølystveien 2 4626 Kristiansand post@kilden.com www.kilden.com		Units : Metric Drawing No. / File Name : Sht-1
			Date : 00/00/0000 Rev. Date : 00/00/0000 Drawn By : Phase : 0





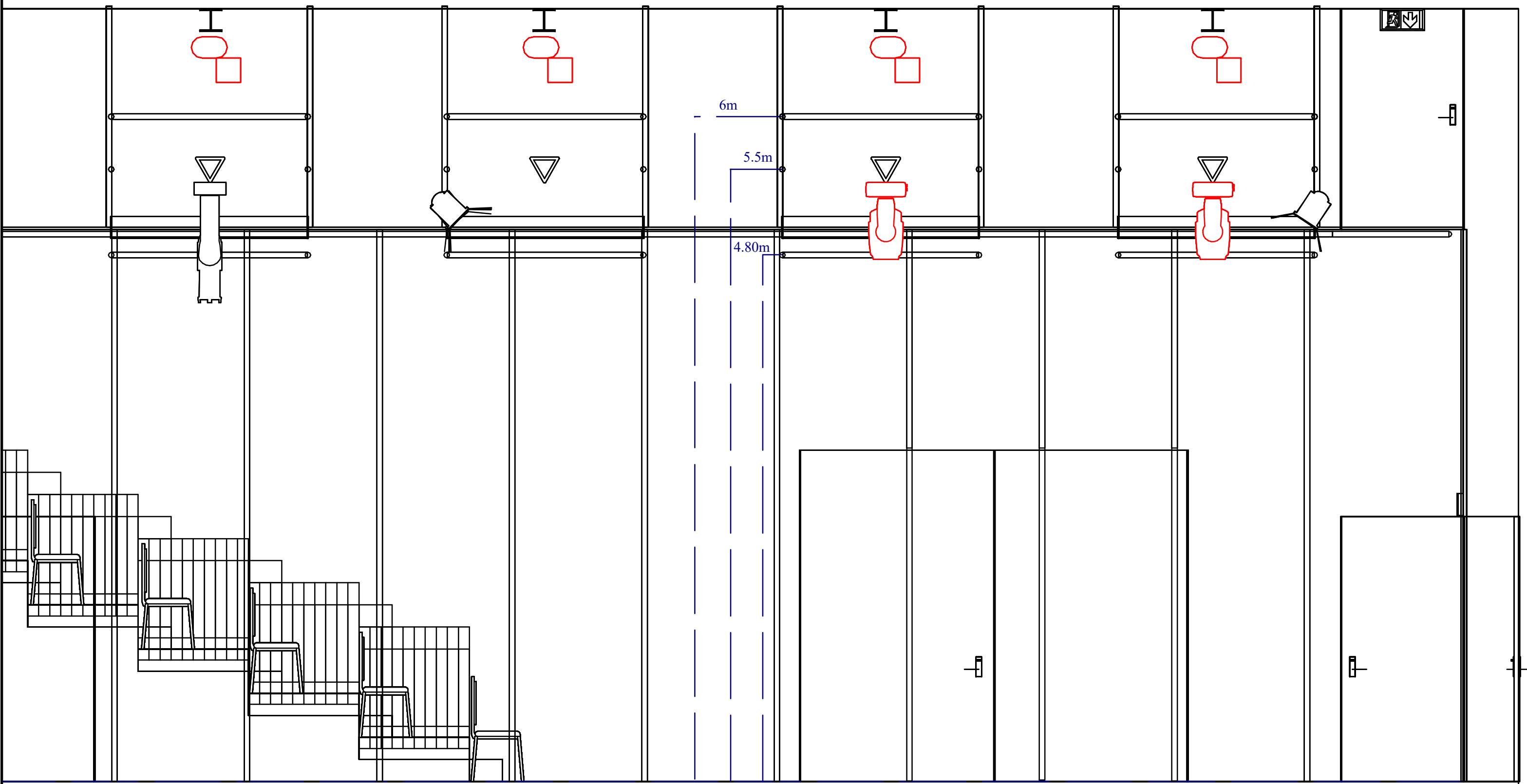


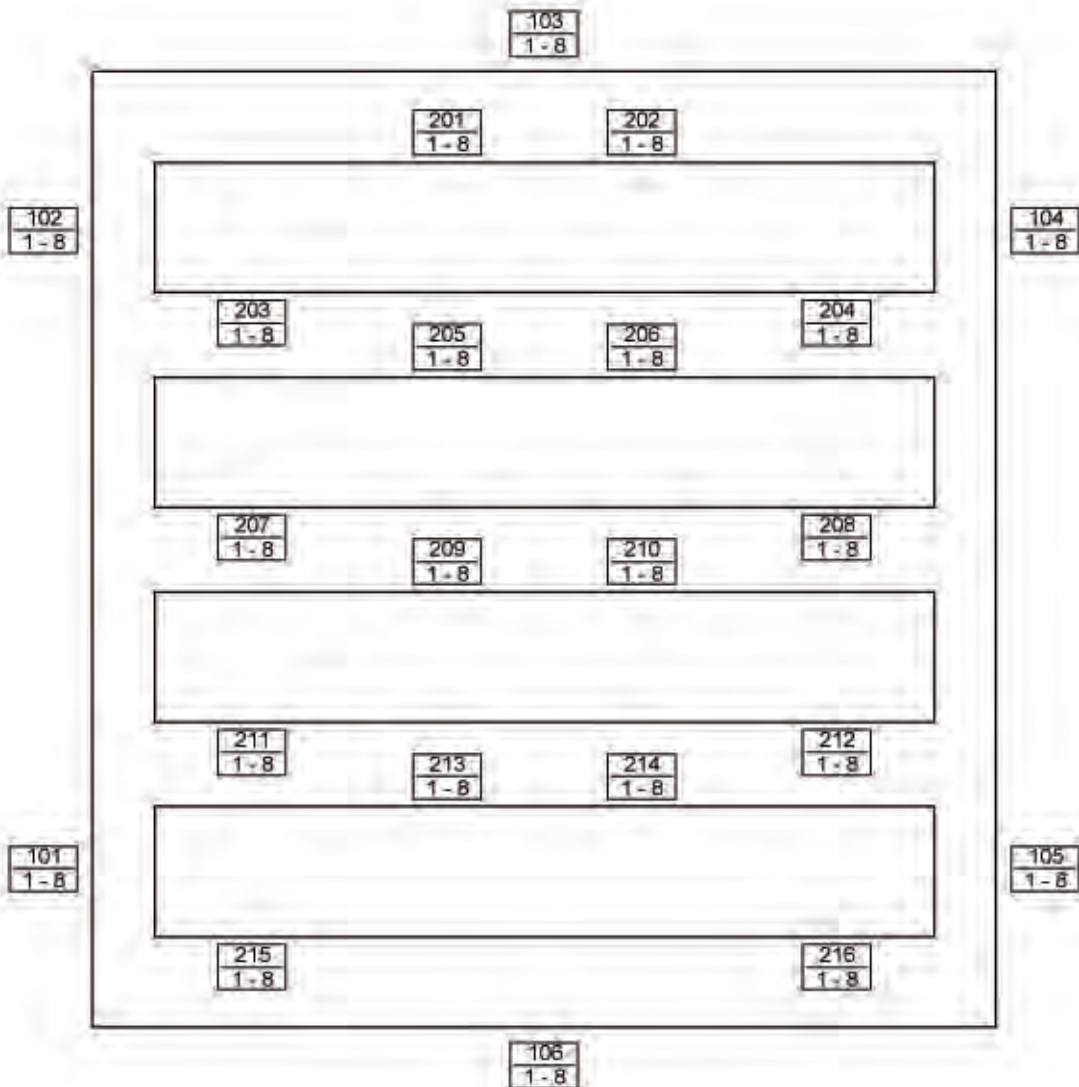
Symbol	Name	Count
	RJ 310HF	8
	Warp/M 12-30deg	4
	Diablo S	4
	ERA 150 Wash	8
	HF 1000	6
	PAR 64	3

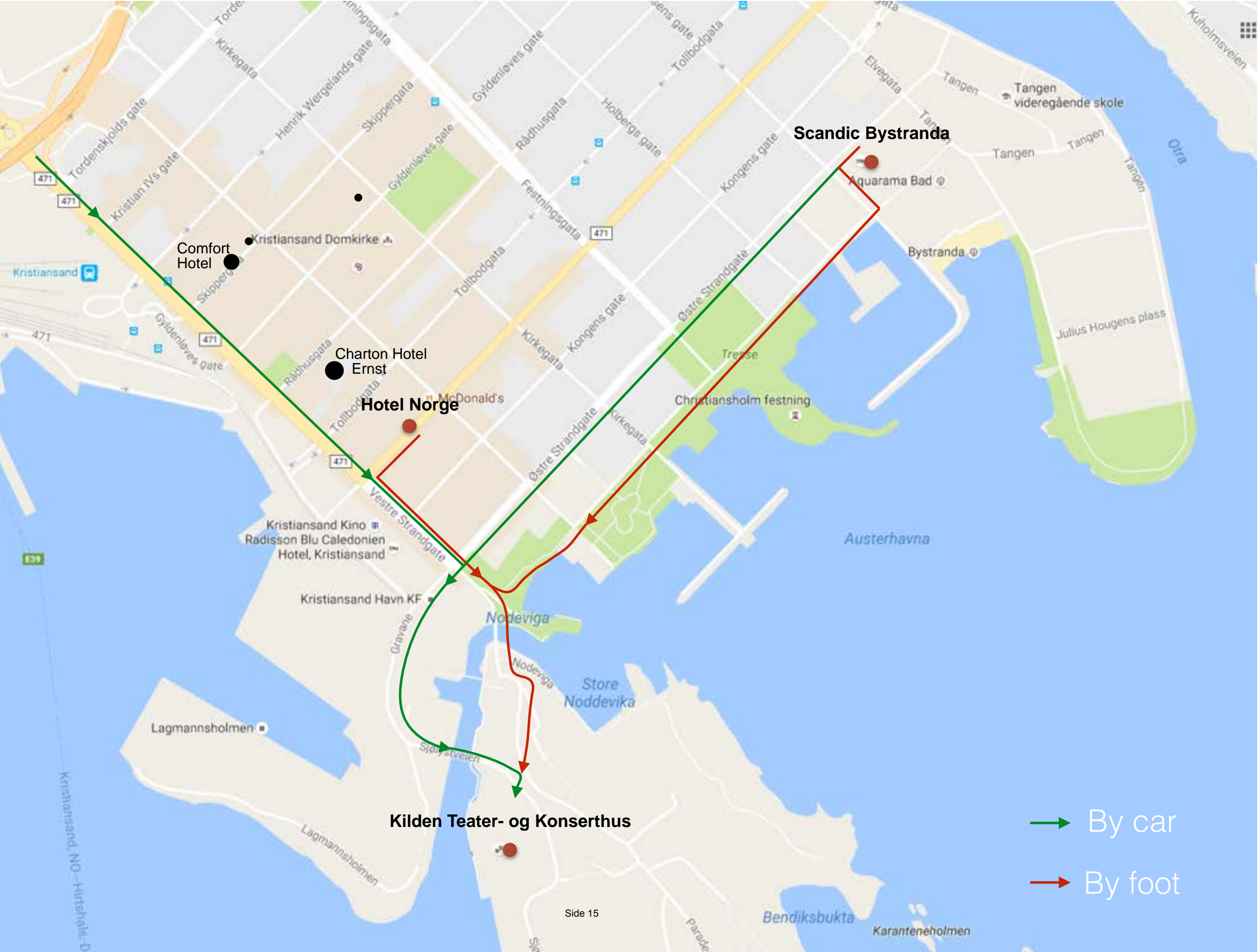
Side 12

POWER
3 x 16A 230V Schuko
1 x 16A 400V CEE
1 x 32A 400V CEE
1 x 63A 400V CEE









→ By car
→ By foot



Kilden
Parking

trailer parking

buss parking

Power

Artist Entrance
load-in Konserthall, and Multihall

load-in Theaterhall

